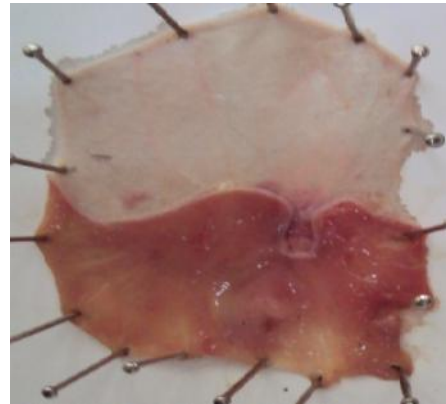


The scientific ignorance of authors is noted ! They don't know, what is macroscopic view and what is histopathology. Please see the following two pages !

Figure 2. Macroscopic view of rat stomach in indomethacin induced gastric ulcer



Indomethacin Group



Ranitidine Group



BPM (250mg/kg)



BPM (500mg/kg)

Figure 2. Histopathology of rat stomach in indomethacin induced gastric ulcer model

HISTOPATHOLOGY OF GASTRIC ULCER

