

UV Spectrophotometric Method for the Simultaneous Determination of Desloratidine and Pseudoephedrine HCl in combined Dosage form

Hussain Raviteja .K^{1*}, Mahesh Nasare¹, Dr. V. V. L. N. Prasad¹, Dr. Prakash V. Diwan¹

¹ Department of pharmaceutical Analysis & Quality Assurance, School of Pharmacy, Anurag Group of Institutions, Venkatapur, R.R Dist, Andhra Pradesh, India.

ABSTRACT:

Aims: UV Spectrophotometric Method for the Simultaneous Determination of Desloratidine and Pseudoephedrine HCl in combined Dosage form.

Study design: A simple, rapid and specific UV spectroscopic method with good sensitivity was developed and validated for the simultaneous determination of Desloratidine and Pseudoephedrine HCl in bulk and pharmaceutical dosage form.

Place and Duration of Study: Department of pharmaceutical Analysis & Quality Assurance, School of Pharmacy, Anurag Group of Institutions, Venkatapur, R.R Dist, Andhra Pradesh, India during February 2013 and April 2013.

Methodology: Vierordt's (Simultaneous equation) method was performed for Estimation of Desloratidine and Pseudoephedrine HCl in Pharmaceutical dosage form.

Results: In Ethanol the λ_{\max} of Desloratidine and Pseudoephedrine HCl was fixed as 240 and 258 nm respectively using a Shimadzu UV-Visible spectrophotometer. In this proposed method both drugs obeyed linearity within the concentration range of 5-30 $\mu\text{g/ml}$ and 80-800 $\mu\text{g/ml}$ for Desloratidine and Pseudoephedrine HCl respectively. The low RSD values indicate good precision and high recovery values indicate accuracy of the proposed method. The proposed method has been applied to the determination of drugs in commercial formulations. Assay results were in good agreement with label claim. The method was validated as per ICH guideline.

Conclusion: The developed method was simple, accurate, precise, specific, sensitive and reproducible which can be efficiently and easily applied to pharmaceutical dosage forms.

Keywords: Desloratidine (DES); Pseudoephedrine HCl (PSE); UV-Visible spectrophotometer; Simultaneous determination.

1. INTRODUCTION

Desloratidine (DES) is chemically 8-chloro-6, 11-dihydro-11-(4-piperdinyldene)-5H benzo [5,6] cyclohepta [1,2-b] pyridine.(Fig 1) Its molecular formula is $\text{C}_{19}\text{H}_{19}\text{ClN}_2$ having molecular weight of 310.82 g/mole. Desloratidine is a tricyclic antihistamine, which has a selective and peripheral H₁-antagonist action. It is an antagonist at histamine H₁ receptors, and an antagonist at all subtypes of the muscarinic acetylcholine receptor. It has a long-lasting effect and in moderate and low doses, does not cause drowsiness because it does not readily enter the central nervous system. [1] Unlike other antihistamines, desloratidine is also effective in relieving nasal congestion, particularly in patients with allergic rhinitis.[2] Pseudoephedrine HCl is chemically (1S,2S)-2-methylamino-1-phenylpropan-1-ol hydrochloride.(Fig 2) Its molecular formula is $\text{C}_{10}\text{H}_{15}\text{NO}\cdot\text{HCl}$ having molecular weight of 201.7 g/mole. Pseudoephedrine is a diastereomer of ephedrine and is readily reduced into methamphetamine or oxidized into methcathinone. Pseudoephedrine is a

*Corresponding author: Email: pharma.raviteja2007@gmail.com, analysis.raviteja2011@gmail.com

sympathomimetic amine. The vasoconstriction that pseudoephedrine produces is believed to be principally a α -adrenergic receptor response. [3] It may be used as a nasal/sinus decongestant, as a stimulant,[4] or as an antitussive drug[5] found in many over-the counter preparations, either as a single ingredient or (more commonly) in combination with antihistamines, guaifenesin, dextromethorphan, and/or paracetamol (acetaminophen) or another NSAID (such as aspirin or ibuprofen).

Literature survey revealed that there are several methods reported on the determination of DES

Both in formulation and biological fluids viz: Spectrophotometry [6-7], Spectrofluorimetry [8], Densitometry [9], Electrophoresis [10], UPLC [11], HPLC with detectors like UV [12-14], fluorescence [15], MS [16-21], ESI-MS/MS [22], and GC with nitrogen phosphorus detector [23]. It has been estimated simultaneously in combination with other drugs using RP-UPLC [24], LC-MS [25], and LC-MS/MS [26-27].

Literature survey revealed that PSE has been estimated individually or in combination with other drugs using UV [28-29], Capillary Electrophoresis [30-31], HPLC [32-37] and HPTLC [38].

Since, No spectrophotometric method has been reported yet for simultaneous estimation of DES and PSE. The present work describes the development of a simple, precise, accurate and reproducible spectrophotometric method for the simultaneous estimation of DES and PSE in Pharmaceutical dosage form. The developed method was validated in accordance with ICH Guideline [39]

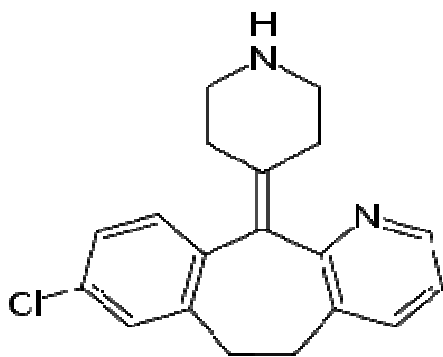


Fig 1: Chemical Structure of Desloratidine

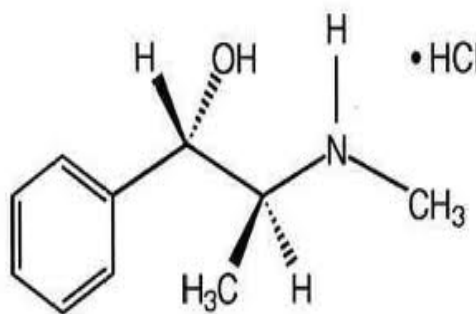


Fig 2: Chemical Structure of Pseudoephedrine HCl

2. MATERIALS AND METHODS

2.1 Materials

2.1.1 Instruments:

Shimadzu UV-Visible Spectrophotometer (Model UV-1800), Shimadzu digital electronic balance (BL 220H), fast clean ultra sonic cleaning system (Life care equipments Pvt Ltd).

2.1.2 Chemicals:

Analytical pure samples of DES and PSE were provided by Savan Pharmaceuticals and Granules India Pvt Ltd as gift samples respectively. Formulation, Clarinex-D12 (DES-2.5mg + PSE-120mg) manufactured by Shering Corporation was procured from a local pharmacy in Hyderabad. Ethanol is used as solvent.

2.2. Methods

2.2.1 Selection of Solvent and λ_{max}

The absorbance of both drugs was found to be maximum in ethanol.so, Ethanol is used as solvent and λ_{max} of DES and PSE was fixed as 240 (Fig 3) and 258 (Fig 4) respectively.

2.2.2 Preparation of DES standard stock solution

Standard stock solution of DES was prepared by dissolving 10mg of drug in 10ml of ethanol to get a concentration of 1000 μ g/ml.

2.2.3 Preparation of PSE standard stock solution

Standard stock solution of PSE was prepared by dissolving 100mg of drug in 100ml of ethanol to get a concentration of 1000µg/ml.

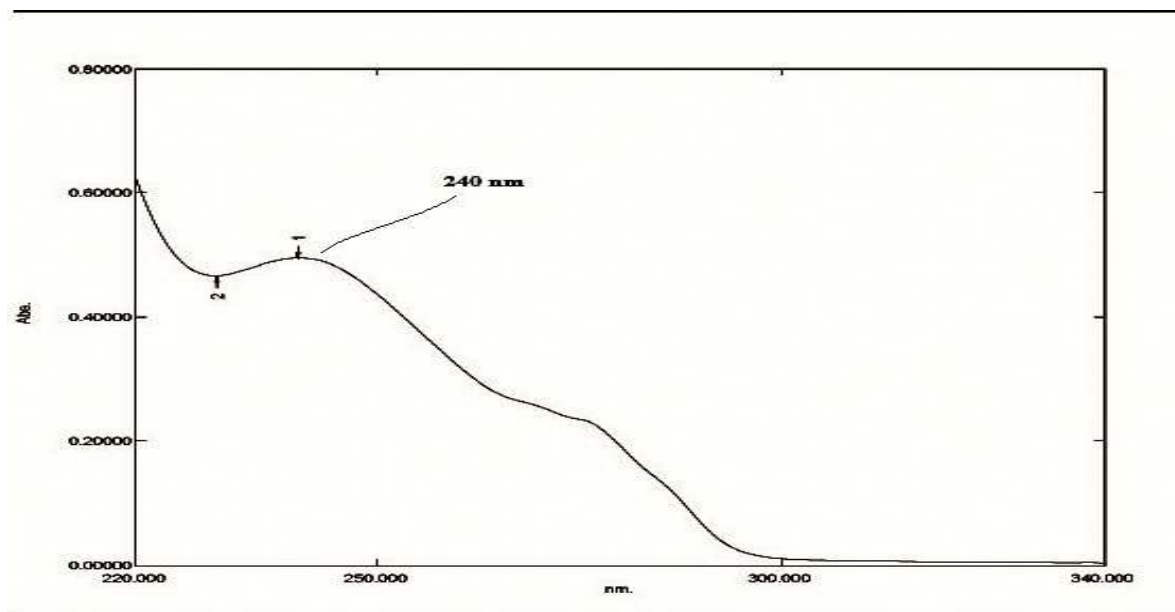


Fig 3: Spectrum of DES showing selected wavelength

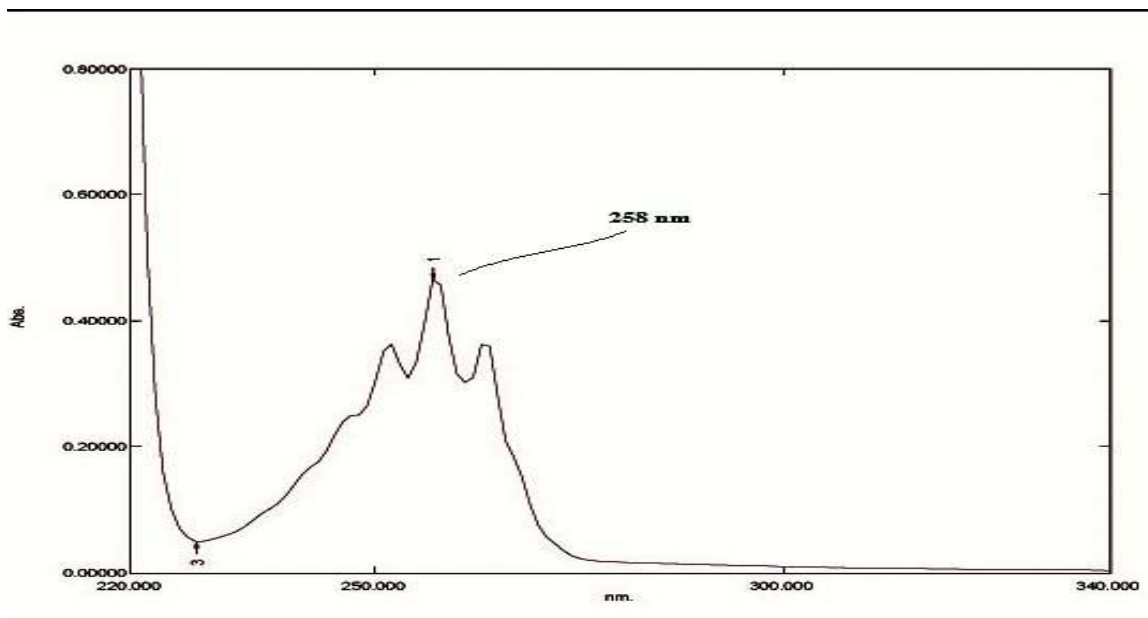


Fig 4: Spectrum of PSE showing selected wavelength

2.2.4 Vierordt's (Simultaneous equation) method

In quantitative estimation of two components by Vierordt's (Simultaneous equation) method two wavelengths i.e, 240nm of DES and 258nm of PSE were selected as their respective λ_{\max} from the overlain spectrum, (Fig 5) at which both drugs have maximum absorbance. A set of two simultaneous equations were formed using absorptivity coefficients at selected wavelengths. The concentrations of two drugs in the mixture were calculated using the following two simultaneous equations.

$$C_x = \frac{A_2 a_{y1} - A_1 a_{y2}}{a_{x2} a_{y1} - a_{x1} a_{y2}} \quad \text{--- (1)}$$

$$C_y = \frac{A_1 a_{x2} - A_2 a_{x1}}{a_{x2} a_{y1} - a_{x1} a_{y2}} \quad \text{--- (2)}$$

Where, C_x and C_y are the concentrations of x and y A_1 is the absorbance of mixture at λ_1 , A_2 is the absorbance of mixture at λ_2 , ax_1 is the absorptive value of x at λ_1 , ax_2 is the absorptive value of x at λ_2 , ay_1 is the absorptive value of y at λ_1 , ay_2 is the absorptive value of y at λ_2 .

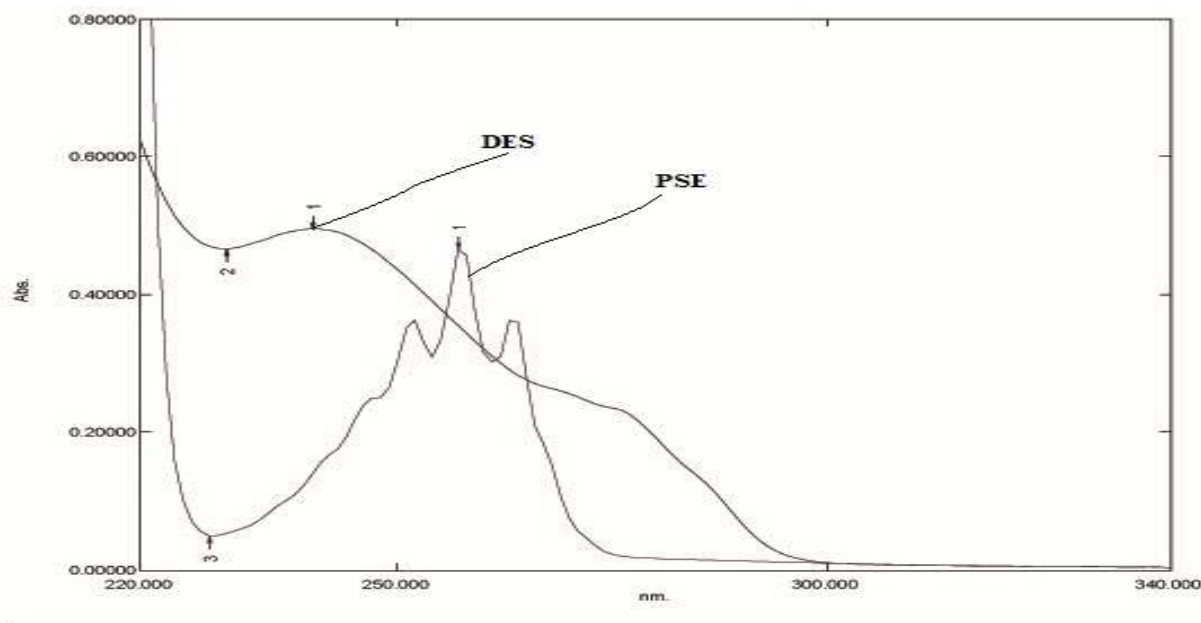


Fig 5: Over lay spectra of DES and PSE

2.3 Validation Parameters

2.3.1 Linearity

To construct Beer's law plot for DES and PSE different aliquots of DES (0.5-3ml) with different concentrations (5, 10, 15, 20, 25, and 30 $\mu\text{g/ml}$) (Fig 6) and PSE (0.8-8.0ml) with different concentrations (80, 160, 240, 320, 400, 480, 560, 640, 720, and 800 $\mu\text{g/ml}$) (Fig 7) were prepared by serial dilutions with ethanol from individual standard stock solutions. Then Absorbances of these solutions were measured at 240 and 258nm for DES and PSE respectively. Linearity values are shown in Table 1.

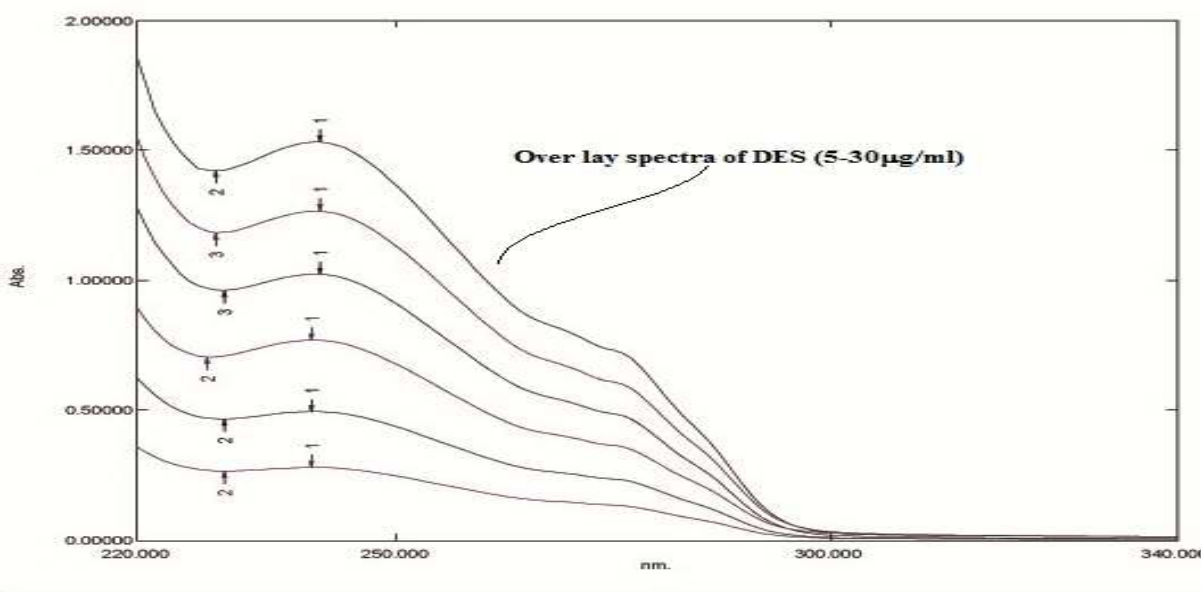


Fig 6: Over lay spectras of DES (5-30 $\mu\text{g/ml}$)

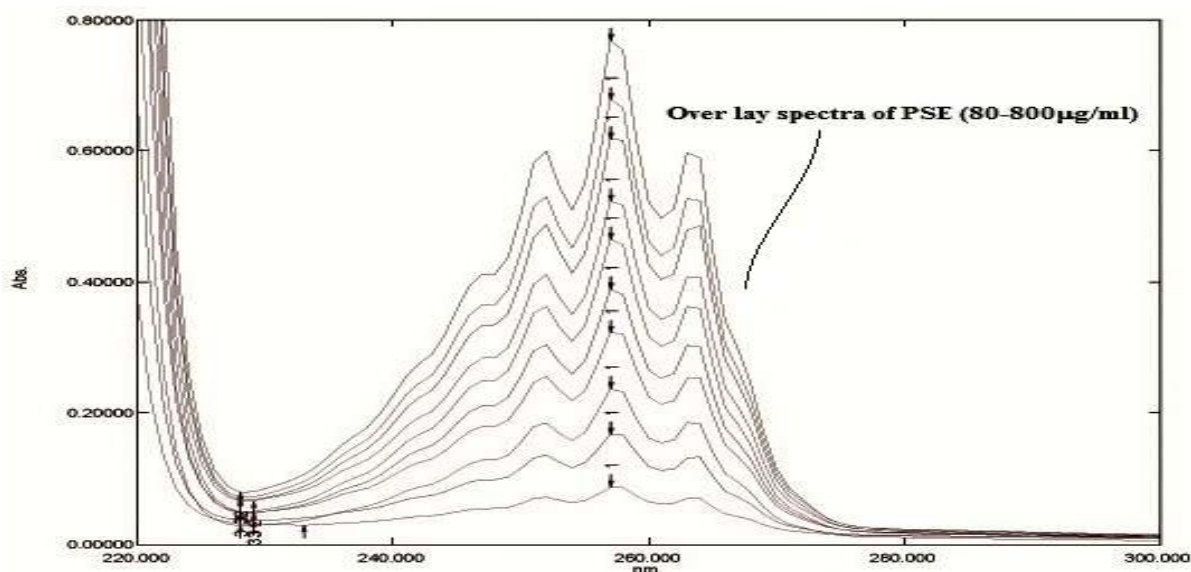


Fig 7: Over lay spectras of PSE (80-800µg/ml)

Table 1: Linearity values of DES and PSE

Parameter	DES	PSE
Range	5-30µg/ml	80-800µg/ml
Slope	0.0504	0.0009
Intercept	0.012	0.0173
R ²	0.9993	0.9986

2.3.2 Precision

The Precision of the method was established by carrying out the analysis of the analyte using the proposed developed method. The low value of standard deviation showed that the methods were precise. The precision values are shown in Table 2.

Table 2: Precision values of DES and PSE

Drug(µg/ml)	% RSD	
	Intra day	Inter day
DES (10µg/ml)	0.88	1.05
PSE (480µg/ml)	1.12	1.34

%RSD of six readings

2.3.3 LOD and LOQ

The limit of detection (LOD) and limit of quantification (LOQ) of the drugs were derived by calculating the signal-to-noise (i.e. 3.3 for LOD and 10 for LOQ) ratio using the following equations designated by International Conference on Harmonization (ICH) guideline.

$$\text{LOD} = 3.3 \times \sigma/S$$

$$\text{LOQ} = 10 \times \sigma/S$$

Where, σ = the standard deviation of the response S = slope of the calibration curve.

The LOD values of DES and PSE was found to be 0.32 $\mu\text{g/ml}$ and 18.33 $\mu\text{g/ml}$ respectively and the LOQ values were found to be 0.99 $\mu\text{g/ml}$ and 55.5 $\mu\text{g/ml}$ respectively.

2.3.4 Accuracy (Recovery studies)

The recovery studies were carried out at two different levels i.e. 100% and 50% levels. To assure the reliability of the above method recovery studies were carried out by mixing a known quantity of the standard drug with the preanalysed sample formulation and the contents were reanalyzed by the proposed method. The % recovery values with % RSD are shown in Table 3.

Table 3: Recovery values of DES and PSE

Drug	Amount added ($\mu\text{g/ml}$) (%)	Amount recovered ($\mu\text{g/ml}$)	% Recovery	% RSD
DES	5 (100%)	4.92-4.98	98.4%-99.6%	0.857
	2.5 (50%)	2.54-2.56	101.6%-102.4%	0.555
PSE	240 (100%)	237.74-238.05	99.06%-99.19%	0.093
	120 (50%)	121.99-122.56	101.7%-102.1%	0.278

%RSD of six readings

2.3.5 Ruggedness

The ruggedness test of analytical assay method is defined as degree of reproducibility of assay results obtained by the successful applications of assay by multiple analysts. The % RSD values of assay performed in the same laboratory by two different analysts was found to be less than 2 indicating the ruggedness of the method. The values are shown in the Table 4.

Table 4: Ruggedness of Assay results and its %RSD values

Analyst	Drug	Label claim (mg)	Amount found (mg)	% Label claim	%RSD
Analyst I	DES	2.5	2.685	107.4	0.6614
Analyst II			2.660	106.4	0.6590
Analyst I	PSE	120	125.3	104.4	0.6741
Analyst II			126.5	105.4	0.6812

%RSD of six readings

2.3.6 Preparation of Test solutions and Estimation of DES and PSE in Formulation

For analysis of commercial formulations 5 tablets (Clarinox D12 containing 2.5mg of DES and 120mg of PSE) were weighed, powdered and weight equivalent to 5mg of DES and 240mg of PSE was taken and transferred into a volumetric flask and made upto 50ml with ethanol, sonicated for 10min, filtered and further diluted with ethanol to get the required concentration of respective drugs and measured the absorbance at 240 and 258nm for DES and PSE respectively. Then the amount of drugs present in the formulation was calculated by using simultaneous equation and the results are shown in Table 5 along with %RSD values.

Table 5: Analysis of formulation and its %RSD values

Drug	Label claim (mg)	Amount found (mg)	%Label claim	%RSD
DES	2.5	2.685	107.4	0.6614
PSE	120	125.3	104.4	0.6741
%RSD of six readings				

3. RESULTS AND DISCUSSION

From the optical characteristics obtained with the proposed method it was found that the drug obeys linearity with in concentration range of 5-30 μ g/ml for DES and 80-800 μ g/ml for PSE. From the precision studies it was found that the % RSD is less than 2% which indicates that the method has good reproducibility. From the results of recovery studies, it was found that the % recovery values of the pure drugs from the preanalysed solutions of formulations were in between 98.4-102.4%, which indicates that the method is accurate and reveals that commonly used excipients and additives present in the pharmaceutical formulations did not interfere in the proposed method. The proposed method was simple, sensitive, and reliable with good precision and accuracy. Hence this method can be used for the routine analysis of DES and PSE in bulk and pharmaceutical formulations.

4. CONCLUSION

A convenient and rapid UV method has been developed for simultaneous estimation of DES and PSE in available dosage form. The assay provides a linear response across a wide range of concentration. Low intra-day and inter-day %RSD coupled with excellent recoveries. Hence, this method can be easily and conveniently adopted for routine analysis of Desloratadine and pseudoephedrine in pure form and its dosage forms.

ACKNOWLEDGEMENT

Authors are thankful to School of pharmacy, Anurag Group of Institutions, Hyderabad, for giving permission to carry out my research work.

AUTHORS' CONTRIBUTIONS

Author Hussain Raviteja managed literature survey, Analysis of the Study and wrote the first draft of manuscript. Author Mahesh Nasare designed the study plan and Analysis of study. Authors Dr. V.V.L.N. Prasad and Dr. Prakash V Diwan approved the work.

REFERENCES

- [1] Mann R, Pearce G, Dunn N, Shakir S, "Sedation with "non-sedating" antihistamines: four prescription event monitoring studies in general practice", *B. M. J.*, **2000**, 320 (7243), 1184-1186.
- [2] Horak F, Stubner UP, Zieglmayer R, Harris AG, "Effect of desloratadine versus placebo on nasal air flow and subjective measures of nasal obstruction in subjects with grass pollen-induced allergic rhinitis in an allergen-exposure unit", *J. Allergy. Clin. Immunol*, **2002**, 109 (6), 956-961.
- [3] Drew, et al., Comparison of the effects of D-(-)-ephedrine and L-(+)-pseudoephedrine on the cardiovascular and respiratory systems in man, *J. Clin. Pharmacol*, **1978**, 6, 225

- [4] Gillies H, Wayne ED, Noakes TD, Smith P, Evans A, Gary G, "Pseudoephedrine is without ergogenic effects during prolonged exercise", *J. Applied Physiology*, **1996**, 81, 2611-2617.
- [5] Minamizawa K, et al., Effect of d-Pseudoephedrine on Cough Reflex and Its Mode of Action in Guinea, *J. Pharmacol. Sci.*, **2006**, 102, 136-142.
- [6] Patel JM, Talele GS, Furule RA, Surana SJ, Extractive Spectrophotometric determination of desloratadine from its bulk and pharmaceutical dosage form, *Indian Drugs*, **2006**, 43(6), 507
- [7] Caglar S, Oztune A, A sensitive spectrophotometric determination of desloratidine in tablets, AOAC, Int., **2007**, 90(2), 372.
- [8] El-Enany N, El-Sherbiny D, Belal F, Spectrophotometric, Spectrofluorometric and HPLC Determination of Desloratadine in Dosage Forms and Human Plasma, *Chem. Pharm. Bull.*, **2007**, 55(12), 1662-1670.
- [9] Endang S, Hoshi BT, Mochammad Y, Gunawan I, Densitometric determination of Desloratidine in tablets, and validation of the method, *J. Planar. Chroma*, **2005**, 18, 19-22.
- [10] Kubaca P, Mikus P, Valaskova I, et al, Desloratadine Electrophoresis, *Ceska. Slov. Farm*, **2005**, 54(6), 266-269.
- [11] Rao DD, Satyanarayana NV, Malleswara Reddy A, Sait SS, Dinesh C, Mukkanti K, A validated stability-indicating UPLC method for desloratadine and its impurities in pharmaceutical dosage forms, *J. Pharm. Biomed. Anal.*, **2010**, 51, 736-742.
- [12] Liu L, Qi M, Wang P, Li H, HPLC method for the bioequivalence evaluation of desloratadine for tablets in dogs, *J. Pharm. Biomed. Anal.*, **2004**, 34, 1013-1019.
- [13] Rele RV, Sawant SA, Mali RN, Advance Reverse Phase High Pressure Liquid Chromatographic Method for Determination of Desloratadine from Pharmaceutical Formulation, *Int. J. Chem. Sci.*, **2009**, 7(4), 2883-2890.
- [14] Mohamed GG, Attia FMA, Ibrahim NS, Development and validation of spectrophotometric and HPLC methods for the determination of desloratadine in tablets and syrup., *J. Pharm. Res.*, **2012**, 5(5), 2799-2805.
- [15] Yin OOP, Shi X, Chow MSS, Reliable and specific high-performance liquid chromatographic method for simultaneous determination of loratadine and its metabolite in human plasma, *J. Chromatogr. B.*, **2004**, 796, 165-172.
- [16] Chen G, Daaro I, Pramanik BN, et al., Structural characterization of in-vitro rat liver microsomal metabolites of antihistamine desloratadine using LTQ-Orbitrap hybrid mass spectrometer in combination with online hydrogen/deuterium exchange HR-LC/MS, *J. Mass Spectrom.*, **2009**, 44(2), 203-213.
- [17] Wen J, Hong Z, Wu Y, Wei H, et al., Simultaneous determination of rupatadine and its metabolite desloratadine in human plasma by a sensitive LC-MS/MS method : application to the pharmacokinetic study in healthy Chinese volunteers, *J. Pharm. Biomed. Anal.*, **2009**, 49(2), 347-353.
- [18] Xu HR, Li XN, Chen WL, et al., Simultaneous determination of desloratadine and its active metabolite 3-hydroxydesloratadine in human plasma by LC/MS/MS and its application to pharmacokinetics and bioequivalence, *J. Pharm. Biomed. Anal.*, **2007**, 45(4), 659-666.
- [19] Lu XY, Sheng-Tu ZH, Chen ZG, et al., Study on determination of desloratadine in human serum and its pharmacokinetics by HPLC/MS, *J. Zhejiang Univ. Med. Sci.*, **2005**, 34(4), 372-374.
- [20] Yang L, Clement RP, Kantesaria B, et al., Validation of a sensitive and automated 96-wellsolid-phase extraction liquid chromatography-tandem mass spectrometry method for the determination of desloratadine and 3-hydroxydesloratadine in human plasma, *J. Chromatogr. B. Anal. Technol. Biomed. Life Sci.*, **2003**, 792(2), 229-240.
- [21] Ramanathan R, Zhong R, Blumenkrantz N, et al., Response normalized liquid chromatography nano spray ionization mass spectrometry, *J. Am. Soc. Mass Spectrom.*, **2007**, 18(10), 1891-1899.
- [22] Suresh PV, Challa BR, Ramarao N, Quantification of desloratadine in human plasma by LC-ESI-MS/MS and application to a pharmacokinetic study, *J. Pharm. Anal.*, **2012**, 2(3), 180-187.
- [23] Johnson R, Christensen J, Lin C, Sensitive gas-liquid chromatographic method for the determination of loratadine and its major active metabolite, descarboethoxyloratadine, in human plasma using a nitrogen-phosphorus detector, *J. Chromatogr. B.*, **1994**, 657, 125-131.
- [24] Kumar N, Sangeetha D, Sunil Reddy P, Prakash L, A Validated Stability-Indicating RP-UPLC Method for Simultaneous Determination of Desloratadine and Sodium Benzoate in Oral Liquid Pharmaceutical Formulations, *Sci. Pharm.*, **2012**, 80, 153-165.
- [25] Shen JX, Xu Y, Tama CI, et al., Simultaneous determination of desloratadine and pseudoephedrine in human plasma using micro solid-phase extraction tips and aqueous normal-phase liquid chromatography/tandem mass spectrometry, *Rapid. Commun. Mass Spectrom.*, **2007**, 21(18), 3145-3155.
- [26] Yang LY, Clement RP, Kantesaria B, Reyderman L, et al., Validation of a sensitive and automated 96-wellsolid-phase extraction liquid chromatography-tandem mass spectrometry method for the determination of desloratadine and 3-hydroxydesloratadine in human plasma, *J. Chromatogr. B.*, **2003**, 792, 229-240.
- [27] Shen JX, Wang HP, Tadros S, Hayes RN, Orthogonal extraction/chromatography and UPLC, two powerful new techniques for bioanalytical quantitation of desloratadine and 3-hydroxydesloratadine at 25 pg/ml, *J. Pharm. Biomed. Anal.*, **2006**, 40, 689-706.

- [28] I. M. Palabiyik, E. Dinc, F. Onur, Simultaneous Spectrophotometric determination pseudoephedrine and ibuprofen in a pharmaceutical preparation using ratio spectra derivative spectrophotometer and multivariate calibration technique, *J. Pharm. Biomed. Anal.*, **2004**, 32, 473-483.
- [29] Ivanovic D, Medenica M, Markovic S, Mandic G, Second derivative spectrophotometric assay of pseudoephedrine, ibuprofen, and loratidine in pharmaceuticals, *Arzneimittel Forschung.*, **2000**, 50, 1004-1008.
- [30] Dong Y, Chen X, Chen Y, Hu Z, Separation and determination of pseudoephedrine, dextromethorphan, diphenhydramine, and Chlorpheniramine in cold medicines by non aqueous capillary electrophoresis, *J. Pharm. Biomed. Anal.*, **2005**, 39(1-2), 285-289.
- [31] Chen H, Chen X, Pu Q, Hu Z, Zaho Z, Separation and determination of ephedrine and pseudoephedrine by combination of flow injection with capillary electrophoresis, *J. Chromatogr. Sci.*, **2003**, 41(1), 1-5.
- [32] Nalini CN, Kavitha K, Simultaneous determination of Pseudoephedrine HCl and Cetirizine HCl by RP-HPLC, *Indian. J. Pharm. Sci.*, **2006**, 68(1), 95-97.
- [33] Hadad GM, Emara S, Mahmoud WM, Development and validation of a stability indicating RP-HPL C method for determination of paracetamol with dantrolene or/ and Cetirizine and pseudoephedrine in two pharmaceutical dosage forms, *Talanta*, **2009**, 79(5), 1306-1307.
- [34] Sivasubramanian L, Lakshmi KS, Reverse phase-high performance liquid chromatographic method for the analysis of paracetamol, cetirizine and pseudoephedrine from tablets, *Der Pharma Chemica*, **2009**, 1 (1), 37-46.
- [35] Kumudhavalli MV, Saravanan C, Kumar M, Jayakar B, Determination of pseudoephedrine Hydrochloride, Cetirizine dihydrochloride and Paracetamol uncoated tablet by RP-HPLC Method, *J. Global Pharm. Tech.*, **2010**, 2(4), 97-101.
- [36] Sandeep R, Simultaneous determination of Chlorpheniramine maleate, paracetamol and pseudoephedrine HCl in pharmaceutical preparations by HPLC, *Int. J. Life. Sci. Pharm. Res.*, **2011**, 1(1), 94-100.
- [37] Rahul S, Sengar NPS, Mehta DP, Lodhi NS, A validated RP-HPLC method for determination of guaifenesin and pseudoephedrine HCl in tablet dosage form, *Int. J. Pharm.*, **2012**, 2(2), 317-321.
- [38] Chitlange SS, Sakarkar DM, Wankhede SB, Wadodkar SG, HPTLC method for simultaneous determination of ibuprofen and pseudoephedrine HCl, , *Indian. J. Pharm. Sci.*, **2008**, 70(3), 398-400.
- [39] ICH Harmonized Tripartite Guidelines, Validation of analytical procedures: Text and Methodology, Q2 (R1), **2005**, Geneva.