

## **Original Research Article**

### **Study of preventive effectiveness of *Nigella sativa* L. against rat kidney stones, generated by ethylene glycol**

#### **Abstract**

**Aims:** The objective of this research is to study the preventive effectiveness of *Nigella sativa* L. against rat kidney stones, generated by Ethylene Glycol.

**Methodology:** In this study, 40 Wistar rats were categorized randomly into four groups of ten. During the research, drinking water labeled group A is mixed with mineral water through utilization of positive control procedures. Into the drinking water labeled group B and other research groups, 1 percent Ethylene Glycol is added through the administration of negative control. In preventive group C, *Nigella sativa* is added from the first day of the research period and in the treatment of group D. After the 15<sup>th</sup> day of the research period, 750 mg/kg *Nigella sativa* powder is administered into the drinking water of rats per day. At the end of the research, kidney tissue samples of rats were stained with haematoxylin and Eosin through the utilization of an optical microscope. Furthermore, serum and urinary samples of rats were analyzed biochemically.

**Results:** The results indicated that the number of Calcium Oxalate crystals in group B increased in comparison with that of group A. Biochemical analysis of serum and urinary samples indicated a significant increase in the number of Calcium Oxalate crystals of group B in comparison with group A. Furthermore, the analyses depict a unanimous decrease of crystals in all the research groups (except in group C) in comparison with group B.

**Conclusion:** The findings of this research indicate that *Nigella sativa* L. does not have any preventive effectiveness against Calcium Oxalate accumulation.

**Keywords:** *Nigella sativa*, Kidney stone, Urinary stone, Calcium Oxalate, Ethylene Glycol

## **1. Introduction**

Urinary stones are the third most prevalent malady of the urinary system. Prevalence of this malady is due to drastic changes in lifestyle and diet; however the exact clinical cause of this disease has not been recognized yet. Acquiring prevalence rate of 1-15 percent worldwide [1], this malady is caused relatively by a number of factors such as age, sex, hereditary characteristics and environmental factors such as meteoric characteristics, diet and the level of healthiness of the drinking water. Urinary stones generate a series of clinical malfunctions such as colic symptoms, renal failure, kidney hydronephrosis, urinary retention and infection, squamous cell carcinoma, nephrocalcinosis and urinary dilation. In today's medical world, various supportive therapies of urinary stones, such as drinking of water and analgesic administration, are administered. In the case of big urinary stones, which are not excreted and therefore, result in serious clinical consequences, revascularization and surgical therapies such as chemical dissolution, transurethral lithotripsy, extracorporeal shock wave lithotripsy and surgery are utilized, all of which are accompanied by high monetary and clinical consequences [2].

80 percent of urinary stones consist of Calcium Oxalate and Calcium Phosphate. Oxalate ion is the most prevalent element in tea, coffee vegetables such as spinach. After its absorption through the small intestine, Oxalate is not metabolized in tissues and blood plasma. Therefore, it is accumulated in the urine flow. The presence of calcium in the small intestine is the key in Oxalate absorption. Magnesium and Sodium of the urine flow can generate complex compounds with Oxalate and result in serious consequences. Therefore, the level of Oxalate in urine flow is of utmost importance in predicting Calcium Oxalate formation in kidneys and urinary system [1]. High level Calcium, Oxalate, Phosphate, Urea and low level Nitrate, Magnesium and Citrate indicate a considerable amount of calcium oxalate density and therefore, result in crystal accumulation in the urinary flow. In addition to the aforementioned characteristics, high level Potassium and low level Magnesium is an indicator of stone

formation in kidneys and urinary system [2]. In recent studies, *Nigella sativa* is proved to possess therapeutic effects including analgesic [3,4], anti inflammation [3-6], antimicrobial [7,8], antiepileptic [9,10], hypolipidemic [11,12], hypoglycemic [13], antioxidant, pro-oxidant [14] and effectiveness against kidney stones formation [15]. Today, considering serious monetary and clinical consequences of surgery, implantation and chemical medicines, researchers rely heavily on administration of herbal and alternative medicines. In the present research, therapeutic effectiveness of *Nigella sativa* L. against rat kidney stone, generated by Ethylene Glycol is studied.

## **2. Materials and Methods**

**2.1. Fauna Treatment:** 40 Wistar rats with the average weight of  $188 \pm 19$  g were categorized randomly into 4 groups (A-D) of ten. Rats were sustained under  $25 \pm 2$  Centigrade temperature and 12 hour long day and night cycles. Food and drinking water were provided unrestrictive for the rats. The amount of consumed water and the average weight of each rat were measured daily and the amount of *Nigella sativa* was administered in a way that can be considered compatible with the amount of water and average weight each rat acquires. The clinical treatment of each group was administered in a 28 day long research period.

**2.2. Plant material:** *Nigella sativa* was collected from the north Khorassan.

**2.3. Preparation of extracts:** The powdered seed (20 g) was boiled in 200 ml boiling water for 15 min. After that, the mixture was filtered and concentrated under reduced pressure at  $35^{\circ}\text{C}$ .

### **2.4. Groups:**

2.4.1. Positive Control group (A): During the research, drinking water of one of the groups is mixed with 1 percent mineral water.

2.4.2. Negative Control Group (B): In the 28 day long research period, 1 percent Ethylene Glycol is added to the drinking water of one of the groups. During the research, no other therapeutic procedure is utilized. It is worth mentioning that administration of Ethylene Glycol in drinking water is considered to be a certified procedure for Calcium Oxalate formation [16-21].

2.4.3. Preventive Group of *Nigella sativa* L (C): In addition to 1 percent Ethylene Glycol, 1 ml of *Nigella sativa* L. orally (alongside 750 mg/kg *Nigella sativa* L. powder) were administered from the first day of the research period.

2.4.4. Therapeutic Group of *Nigella sativa* L (D): In the first day, rats are given 1 percent Ethylene Glycol and from the 15<sup>th</sup> day of the research period, it was administered orally alongside *Nigella sativa* L, which is provided through Soxhlet Extractor.

**2.5. Urine Collection:** During the zero and 28 day of the research period, 24-hour urine collection of rats of each research group were administered individually in the metabolic cage. The day before the first day of the research period, each rat was weighed separately in the metabolic cage. After 24 hours, urine samples were collected and preserved in laboratory freezers. In order to measure the level of oxalate and Citrate, enzymatic methodology was utilized and Flame Photometer was administered in the measurement of the Potassium level of the serum samples.

**2.6. Serum Sample Preparation:** For serum sample preparation, blood samples of each group was utilized from the optic sinuses in the day zero of the research and in the 29<sup>th</sup> day, blood samples were extracted from the heart muscle after moderate Etherization. After their clinical clotting, two samples were centrifuged at 3000 rounds for 20 minutes. The third sample was separated by pipette and poured in another test tube. In order to measure the Potassium and Magnesium level of the samples, Flame Photometer and Xylidylblue Reagent were utilized respectively.

**2.7. LD<sub>50</sub> Value:** LD50 values of *Nigella Sativa L.*, obtained by single doses, orally and intraperitoneally (I.P.) administered in rat, were 28.5 ml/kg body wt. p.o. [25.9-30.4] and 2.03 ml/kg body wt. i.p. [1.82-2.25].

**2.8. Pathological Analyses:** After clinical treatment of rats in the 29th day, they were etherized moderately so that their kidneys can be removed through their abdomen and weighed. Each pair of kidneys were placed in a test tube which contains 10 percent Formaldehyde solvent. Microscopic incisions with 5 micron thickness were administered on the kidneys of the rats and then, the incised tissues were stained with haematoxylin and Eosin through utilization of Olympus optical microscope. In each incision, 10 microscopic fields with the magnification of 10×40 were selected randomly and the number of Oxalate crystals was measured separately. Considering the number of crystals and fields in each slide and sample, the average number of Oxalate crystals is reported statistically.

**2.9. Statistical Measurements:** For data analysis, In Stat software application was utilized and for group comparison, ANOVA and Kramer Tukey tests were administered.  $P < 0.05$  was considered as statistically significant.

### **3. Results and Discussion**

#### **3.1. Results of Pathological Analyses:**

**3.1.1. Positive (A) and Negative (B) Control Groups:** There was no Oxalate crystal or other renal malfunction in kidney tubes of group A (Figure No. 1- Positive Control). However, in group B, Calcium Oxalate sediments were present in the renal tubes to the extent that in the microscopic analyses of the kidneys, considerable accumulation of Calcium Oxalate crystals was detected in the urinary tubes and other sections of the system such as Proximal, Distal, Loop of Henle, Collecting duct and Nephrons (Figure No. 2, Negative Control). The number of Oxalate crystals was 28 in 10 microscopic fields, which acquires significant increase in comparison with group A ( $P < 0.001$ ).

**3.1.2. Preventive (C) and Therapeutic (D) Groups of *Nigella sativa* L:** In groups C, the number of crystals of 10 microscopic fields was  $23.8 \pm 4.609$ . Therefore, it was indicated that in this group, the number and the size of crystals were higher and more variegated in comparison with the statistical reports of other groups which were administered through negative control procedures. However, it did not acquire any statistical significance over the latter. In group D, the number and the size of crystals were high and variegated, but it was significantly meager in both aspects in comparison with the rates of group C considering the average rate of  $12.8 \pm 3.732$ , the number of crystals in this group was lower in comparison with the rates of group C; however, it did not acquire any statistical significance over other groups.

#### **3.2. Results of Biochemical Analyses of Urine Samples**

In the day zero, the level of Oxalate was statistically equal in all the research groups and there existed no statistical difference between them. In the last day of the research period, the level of Oxalate crystals increased in those groups which were monitored negatively and therefore, depict a statistical significance over the groups which were administered through positive procedures. Furthermore, statistical differences were detected between those groups which

were administered negatively, the monitoring group of *Nigella sativa* L. ( $P<0.001$ ). None of the results of the aforementioned groups acquired any statistical significance with the group which was administered positively.

Regarding the citrate level of urine samples in different stages of the research, this level decreased in the negative groups, but did not acquire any statistical significance over the positive group. On the other hand, the positive group acquired statistical significance over the preventive group of *Nigella sativa*, preventive and therapeutic groups of *Nigella sativa* L. ( $P<0.001$ ) and monitoring group of olive oil ( $P<0.01$ ). None of the results of the aforementioned groups acquired any statistical significance with the group which was administered negatively.

### **3.3. Results of Biochemical Analyses of Serum Samples:**

In day zero of the research period, the level of serum Potassium was statistically equal in all the research groups and there existed no statistical difference between them. In the last day of the research period, the level of Potassium decreased in those groups which were monitored negatively and therefore, depict no statistical significance over the groups which are administered through positive procedures. On the other hand, the negative group acquired statistical significance over the therapeutic group of *Nigella sativa* and preventive and therapeutic groups of *Nigella sativa* L ( $P<0.01$ ). None of the groups acquired statistical significance over the positive group.

### **3.4. Kidney Weights:**

The average weight of kidneys was  $2.81\pm 0.26$  g, indicating that they were heavier than the ones in the positive group, which acquired  $1.73\pm 0.07$  g average kidney weight.

The most important finding of the present study is the fact that *Nigella sativa* acquires therapeutic effectiveness against Calcium Oxalate in the preventive research group. Since

Calcium Oxalate crystals were accumulated after a two week long administration of Ethylene Glycol, it can be claimed that *Nigella sativa* is therapeutically effective against crystal accumulation and unformulated Calcium Oxalates; however, it does not acquire effectiveness against big crystal accumulations. In Hajzadeh's study (2007), a similar kind of therapeutic effectiveness of *Nigella sativa* against Calcium Oxalate Crystals of rats was recorded. In his study, therapeutic effectiveness of *Nigella sativa* against Calcium Oxalate crystal accumulation was considered higher than the level of effectiveness of *Nigella sativa* L. against a similar malady [15]. In a study on rats with kidney stones — whose stones have been generated as a result of cholesterol/ fat consumption — consequential maladies such as lipidic disorders, hyperoxaluric, hypercalciuria and nephrocalcinosis of phosphate and calcium, and kidney stones emerged. In the study, due to its anti-lipidic effectiveness, the researchers proposed *Nigella sativa* as the preventive and therapeutic medicine against such kidney stones [22].

It is worth mentioning that high level oxalate accumulation and calcium oxalate crystals in urine cause pathological consequences for epithelial tissues of renal tubes. Encountering such accumulations, epithelial tissues spews a series of macro molecules such as Bikunin, Osteopontin, Tamm Horsfal as a proteomic compound and Co-transporter Sodium Dicarboxylat, all of which are involved in facilitation of crystal accumulation in the renal tubes [23].

On the other hand, tissue damage results in accumulation of those elements which induce nucleus production of heterogeneous crystals and facilitate crystal tenacity and accumulation. Caused by freed radicals, pathological damages of epithelial tissues of renal tubes can induce nucleus production of heterogeneous crystals as well [24]. Proper consumption of Vitamin E will decrease pathological effects of pro-oxidants and balance level of antioxidant accumulation in renal tissues, resulting in prevention against Calcium Oxalate accumulation [25]. In photochemical analyses of Khorasan made *Nigella sativa* L., chemical compounds such as Tannin (+3), Flavonoid (+) and Alkaloid (+2) are recognized [26] and some of the



Flavonoids are of Aglycone and Glycolic Flavone families, which are recognized in *Nigella sativa* and such Flavonoids curbs the intensity of pro-oxidants by dissolution of radical super oxidants in blood flow. Through the dissolution of free radicals, tissue damages will be reduced drastically [27]. Therefore, the key in generation of therapeutic effectiveness of *Nigella sativa* against kidney stones is their antioxidant impacts. Such an impact will curb the level of tissue damage, caused by accumulated crystals, by eliminating free radicals and other progressive factors in induction of nucleus production of heterogeneous crystals. In other recent studies, it is depicted that *Nigella sativa* acquires anti-inflammatory characteristics by maintaining muscle velum and preventing 5-Lipoxygenase enzymes and other Leukocyte activating genes [28]. Therefore, the study believes that anti- inflammatory and antioxidant characteristics of *Nigella sativa* are the clinical causes of therapeutic effectiveness of *Nigella sativa* against kidney stones. These clinical characteristics interrupt cell-damaging process of crystals by limiting free radicals, which would induce nucleus production of heterogeneous crystals and facilitate crystal tenacity, accumulation and inflammatory features [28]. Some of the recent studies suggest that calcified stones, acquiring infectious impacts, can be prevented through utilization of antimicrobial characteristics of *Nigella sativa* [29]. As a result, they believe that clinical effectiveness of *Nigella sativa* against kidney stones is due to its antimicrobial features.

High mass Calcium, Oxalate, Phosphate, Urea excretions and low mass Nitrate, Magnesium, Citrate excretions in urine will increase the level of Calcium Oxalate crystals. Apart from the aforementioned facts, high level of Potassium and low level of Magnesium will facilitate crystal formation. Since levels of Oxalate, Citrate, Potassium and Magnesium are of key factors in etiological studies of kidney stones, it is indicated then that through administration of Ethylene Glycol, the level of urine Oxalate increased in Wistar rats and in the preventive, therapeutic groups of *Nigella sativa* and *Nigella sativa* L., the clinical utilization of *Nigella sativa* decreases the level of Urine Oxalate.

In another study on Calcium Oxalate crystals in Wistar rats, administration of *Cyclea Peltata* powder will decrease kidney stones accumulation. Researchers of the study believes that sudden fall of Potassium level and Calcium Oxalate accumulation rate have two clinical causes besides the therapeutic effectiveness of *Cyclea Peltata* powder [30]. In another research, hyperoxaluric disorder of rats with Ethylene Glycol administration was studied. It is indicated that *Nigella sativa* acquired therapeutic effectiveness against their hyperoxaluric disorder and their high level of Calcium Oxalate accumulation [15]. Therefore, it is deduced that limitation of Oxalate synthesis will cause its excretion through urine flow and decrease its accumulation in kidneys and urinary system; especially in those subjects who have been administered under Ethylene Glycol. In another study, fluoride was considered as a preventive therapy against kidney stone accumulation [31].

Citrate is considered to be one of the most important elements in elimination of Calcium ions in urine through its synthesis with Calcium. Meager rate of urine Citrate will cause Oxalate accumulation in the urinary system [2]. Therefore, it is suggested that administration of Citrate Potassium in people inflicted with kidney stones will therapeutically impact their hypocitraturic condition through facilitation of Citrate absorption and the level of their urine excretion [32]. Oral administration of L-arginine will facilitate the level of Citrate absorption as well [33]. Furthermore, administration of Citrate- Magnesium- Potassium compounds will curb the possibility of kidney stone regression for 3 years up to 85 percent [34].

The findings of the present study depicts that administration of Ethylene Glycol will curb the average level of urine Citrate of the second group in comparison with the first group. Such an administration will cause hypocitraturic disorder and as a result, facilitate Oxalate crystal accumulation. In the present study, it is indicated that the level of Citrate is not significantly different in those groups which were administered by *Nigella sativa*. According to the results of the study, it is deduced that *Nigella sativa* does not exercise its therapeutic effectives on kidney stones and Oxalate crystals by facilitating the level of urine Citrate.

In another study, average Potassium level in research positive and negative groups were compared and it is deduced that administration of Citrate Potassium will therapeutically impact subjects with hypocitraturic condition through facilitation of Citrate absorption at the level of urine excretion (30). Furthermore, administration of Citrate-Magnesium-Potassium compounds will curb the possibility of kidney stone regression for 3 years up to 85 percent [31]. It is worth mentioning that this finding is not in correlation with the findings of the present study, since it is based upon supersaturated Potassium theorem which believes in clinical elimination of kidney stones through facilitation of urine Potassium level. Considering variations in Potassium level, it can be affirmed that administration of Ethylene Glycol or *Nigella sativa* do not acquire their clinical impacts on formation or elimination of kidney stones through increase or decrease of urine Potassium level of Wistar rats.

Ethylene Glycol causes **sudden increase** in weight of rat kidneys. Such an increase is due to water retention in renal tissues or it is the result of inflammatory condition of epithelial Nephron tissues, caused by high level Oxalate accumulation (Figure No. 2).

At the same time, weight decrease of the other three groups in comparison with the research positive group can be related to the anti-inflammatory effectiveness of *Nigella sativa* and its most important variant, Thymoquinone [3-6].

#### **4. Conclusion**

Pathological observations of the present study indicate that administration of *Nigella sativa* acquires therapeutic effectiveness against kidney stones and therefore, it can be claimed that its variants can be utilized in the prevention and therapy of kidney stones and Oxlate crystals. Of course, in order to verify such findings on therapeutic effectiveness of *Nigella sativa* more accurately, similar studies must be administered on human subjects.

#### **Ethical Approval**

All authors hereby declare that "Principles of laboratory animal care" (NIH publication No. 85-23, revised 1985) were followed, as well as specific national laws **were** applicable. All experiments have been examined and approved by the appropriate ethics committee

## References

1. Stoller ML, Bolton DM. Urinary stone diseases. In: Tanagho EA, McAninch JW, editors. Smith's general urology. 15 th ed. Ohio: McGraw-Hill; 2004. p. 291-321.
2. Menon M, Resnick M. Urinary lithiasis: etiology, diagnosis and medical management. In: Compbells Urology. 8th ed. London: Saunders 2007; 3229-305.
3. Al-Ghamdi MS. The anti-inflammatory, analgesic and antipyretic activity of *Nigella sativa*. J Ethnopharmacol 2001; 76(1): 45-8.
4. Hajhashemi V, Ghannadi A. and Jafarabadi H. Black cumin seed essential oil, as a potent analgesic and anti inflammatory drug. Phytother Res 2004; 18(3): 195-199.
5. Mutabagani A, El-Mahdy SAM. A study of the anti-inflammatory activity of *Nigella sativa* L and thymoquinone in rats. Saudi Pharm J 1997; 5 (2): 110-113.
6. Houghton P, Zarka R, Hoult J. Fixed oil of *Nigella sativa* and derived **thymoquinone inhibite ecosanoid** generation in leukocytes and membrane lipid peroxidation. Planta Med 1995; 61: 33-36.
7. Salem ML. Immunomodulatory and therapeutic properties of the *Nigella sativa* L. seed. International Immunopharmacology 2005; 5(13-14): 1749-1770.
8. Morsi NM. Antimicrobial effect of crude extracts of *Nigella sativa* on multiple antibiotics-resistant bacteria. Acta Microbiol Pol 2000; 49(1):63-74.
9. Hosseinzadeh H, parvardeh S. Anticonvulsant effects of thymoquinone, the major constituent of *Nigella sativa* seeds, in mice. Phytomedicine 2004; 11: 56-64.
10. Hosseinzadeh H, Parvardeh S, Nassiri-Asl, M, Mansouri, MT. Intracerebroventricular administration of thymoquinone, the major constituent of *Nigella sativa* seeds, suppresses epileptic seizures in rats. Med Sci moni 2005; 11: 106-110.

11. Bamosa AO, Ali BA, al-Hawsawi ZA. The effect of thymoquinone on blood lipids in rats. *Indian J PhysiolPharmacol* 2002; 46(2): 195-201.
12. Sattar A, Latif MSZ, Tayyib M. Estimation of serum lipids in Albino rats fed on atherogenic supplemented palm oil diet and *Nigella sativa*. *J Rawalpindi Medical College* 2002; 6: 48-51.
13. EL-Dakhakhny M, Madi NJ, Lembert N, Ammon HP. The hypoglycemic effect of *Nigella sativa* oil is mediated by Extrapancreatic actions. *Planta Med* 2002; 68: 465-466.
14. Burits M, Bucar F. Antioxidant activity of *Nigella sativa* essential oil, *Phytother. Res* 2000; 14: 323-328.
15. Hadjzadeh MAR, Hadjzadeh Z, Khoei AR, Parizadeh MR. The effects of ethanolic extract of *Nigella Sativa* L. seeds on ethylene glycol induced kidney stone in rat. *Urology Journal*. 2007; 4: 86-90.
16. Christina AJ, Packia Lakshim M, Nagarajan M, Kurian S. Modulatory effect of *Cycleapeltata* Lam. On stone formation induced by ethylene glycol treatment in rats, *Methods Find Exp. Clin.Pharmacol* 2002; 24: 77-79.
17. Sakly R, Chaouch A, El-Hani A, Najjar MF. Effects of intraperitoneally administered vitamin E and selenium on calcium oxalate renal stone formation: experimental study in rat. *Ann Urol(Paris)* 2003; 37: 47-50.
18. Fan J, Chandhoke PS, Grampsas SA. Role of sex hormones in experimental calcium oxalate nephrolithiasis. *J Am Soc. Nephrol* 1999; 10: 376-380.
19. Green ML, Hatch M, Freel RW. Ethylene glycol induces hyperoxalaluria without metabolic acidosis in rats. *AM J Physiol* 2005; 289(3): 536-543.
20. Harrison D, Griendling KK, Landmesser U, Hornig B, Drexler H. Role of oxidative stress in atherosclerosis. *Am J Cadiol* 2003; 91(3A): 7-11.
21. Battino M, Quiles JL, Huertas JR, Ramirez-Tortosa MC, Cassinello M, Manas M et al. Feeding fried oil changes antioxidant and fatty acid pattern of rat and affects rat liver mitochondrial respiratory chain components. *J Bioenerg Biomembr* 2002; 34(2):127-34.
22. Schmiedl A, Schwille PO, Bonucci E, Erben RG, Grayczyk A, Sharma V. Nephrocalcinosis and hyperlipidemia in rats fed a cholesterol- and fat-rich diet: association

with hyperoxaluria, altered kidney and bone minerals, and renal tissue phospholipid-calcium interaction. *Urol Res* 2000; 28(6): 404-15.

23. He Y, Chen X, Yu Z, Wu D, Lv Y, Shi S, Zhu H. Sodium dicarboxylate cotransporter-1 expression in renal tissues and its role in rat experimental nephrolithiasis. *J Nephrol* 2004; 17(1): 34-42.

24. Khan SR, Thamilselvan S. Nephrolithiasis: a consequence of renal epithelial cell exposure to oxalate and calcium oxalate crystals. *Mol Urol Winter* 2000; 4(4): 305-12.

25. Thamilselvan S, Menon M. Vitamin E therapy prevents hyperoxaluria-induced calcium oxalate crystal deposition in the kidney by improving renal tissue antioxidant status. *BJU Int* 2005; 96(1): 117-26.

26. Fazly Bazzaz B. S, Haririzadeh G, Imami SA, Rashed M. H. Survey of Iranian plants for alkaloids, flavonoids, saponins, and tannins [Khorasan province], *Int J Pharmacog* 1997; 35: 17-30.

27. Comalada M, Ballester I, Bailon E, Sierra S, Xaus J, Galvez J, et al. Inhibition of pro-inflammatory markers in primary bone marrow-derived mouse macrophages by naturally occurring flavonoids: Analysis of the structure-activity relationship, *Biochem. Pharmacol* 2006; 72: 1010-1021.

28. El Dakhakhny M, madi NJ, Lember N, Ammon HP. Nigella sativa oil, nigellone and derived thymoquinone inhibit synthesis of 5-lipoxygenase products in polymorphonuclear leukocytes from rats. *J Ethnopharmacol* 2002; 81(2): 161-164.

29. Kramer G, Klingler HC, Steiner GE. Role of bacteria in the development of kidney stones, *Curr. Opin. Urol* 2000; 10: 35-38.

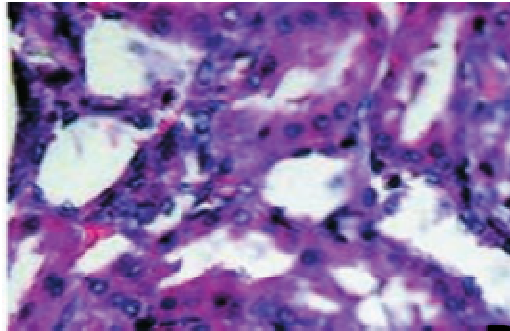
30. Christina AJ, Packia Lakshmi M, Nagarajan M and Kurian S. Modulatory effect of *Cyclea peltata* Lam. on stone formation induced by ethylene glycol treatment in rats. *Methods Find Exp Clin Pharmacol* 2002; 24(2):77-9.

31. Li LC, Zhang YS, Hu RZ, Zhou XC. Inhibitory effect of fluoride on renal stone formation in rats. *UrolInt* 1992; 48(3):336-41.

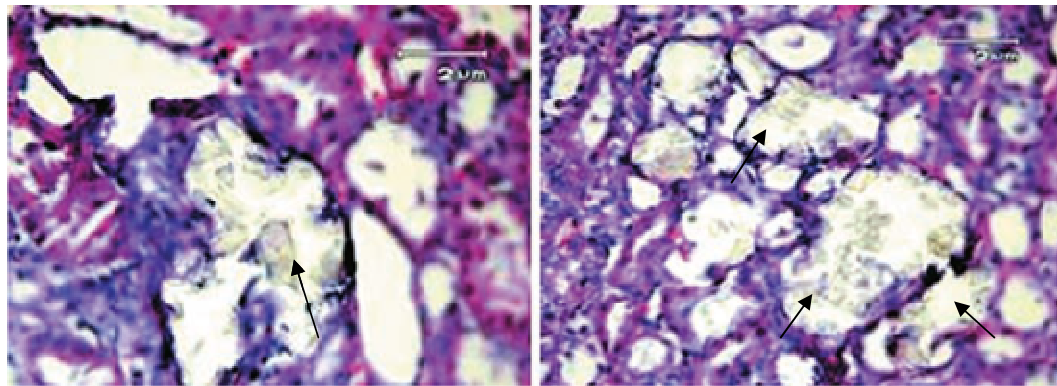
32. Tekin A, Tekgul S, Atsu N, Bakkaloglu M, Kendi S. Oral potassium citrate treatment for idiopathic hypocitruria in children with calcium urolithiasis. *J Urol.* 2002; 168(6): 2572-4.

33. Pragasam V, Kalaiselvi P, Sumitra K, Srinivasan S, Varalakshmi P. Oral L-arginine supplementation ameliorates urinary risk factors and kinetic modulation of Tamm-Horsfall glycoprotein in experimental hyperoxaluric rats. *ClinChimActa* 2005; 360(1-2):141-50.

34. Chapple CR. Potassium-magnesium citrate is an effective prophylaxis against recurrent calcium oxalate nephrolithiasis. *Curr Opin Urol.* 1998; 8(4): 341.



**Figure 1. Nephrons and Renal Tubules, Magnified 10×40, H/E Stained**



**Figure 2.**

**Left: Urinary Tubes with Calcium Oxalate Crystals in the Ethylene Glycol Groups,  
Magnified 10×40, H/E Stained**

**Right: Urinary Tubes with Calcium Oxalate Crystals in the Ethylene Glycol Groups,  
Magnified 10×40, H/E Stained**

