

**Original Research Article**

**Active Soil Organic Carbon Fractions and Aggregate Stability effected by Minimum Tillage and Crop Rotations on a Marginal Dryland Soil in Punjab, Pakistan**

**ABSTRACT**

Conservation agriculture (CA) is an important technique for enhancing soil organic carbon (SOC) content in the surface layer and improving structural stability. CA is not widely practiced in dryland soils of developing countries where marginal farming practices are extensively used. Therefore, a field study was conducted in dryland region of Punjab, Pakistan to compare minimum tillage and intensified cropping systems effects on active SOC fractions and aggregate stability. The experiment was laid out in a split-plot design having moldboard plough (MP) and minimum tillage (MT) as main plots, and crop sequences as sub-plots. The latter comprised of fallow–wheat (*Triticum aestivum* L.), (FW, control), mungbean (*Vigna radiate* L.)–wheat (MW), sorghum (*Sorghum bicolor* L.)–wheat (SW), green manure–wheat (GW) and mungbean-chickpea (MC) (*Cicer arietinum* L.). Tillage systems had more pronounced effects than cropping sequences on microbial biomass carbon (MBC), potentially minerlizeable carbon (PMC) and particulate organic carbon (POC). The PMC in second year was significantly more in the soil under MT than that under MP especially with SW, GW and FW sequences (448, 442 and 419  $\mu\text{g g}^{-1}$  soil day<sup>-1</sup>, respectively). High MBC was also recorded under MT mainly with MW (361  $\mu\text{g g}^{-1}$ ). POC was the highest under MP with MC sequence and was 6.41% more than that under MT. More water stable aggregate (WSA) was recorded in soil under MT plots sown with MC and GW (48.62% and 46.25%, respectively) than that under MP. The results indicate that MT with legume based-cropping sequences reduced breakdown of soil aggregates than the current MP and fallow-based systems in Pothwar, Pakistan.

**Keywords:** Conservation agriculture; microbial biomass C; potentially mineralizable C; particulate organic C; Punjab; Mungbean; Photwar; Pakistan

**1. INTRODUCTION**

Soil organic carbon (SOC) is a complex mixture of organic compounds originating from plant residues, microbes and animals. Besides its multifarious role in soil quality and agronomic production, SOC plays a critical role in the global C cycle (1 ). It is the largest terrestrial C pool after fossil fuel deposits, and contains thrice as much C as that in the entire terrestrial vegetation (2). Thus, recent two decades since 1990 have witnessed a renaissance in SOC research, and it has emerged as a key indicator of soil quality for agricultural and environmental sustainability ( 3). The complex organic constituents of SOC vary in the age and ease of decomposability hence they have been conceptually divided into three pools: active, slow and passive. [4,5 and 6]. The active fractions [(e.g. microbial biomass C (MBC) and potentially mineralizable C (PMC) and particulate organic carbon (POC)], are labile and have turnover time of days to years [7]. These fractions play an important role in soil's moderating capacity for nutrient cycling and physical properties. The active fractions are

30 fairly responsive to management changes and serve as an early indicator of long-term SOC  
31 turnover. The slow and passive fractions are relatively more resistant to decomposition and  
32 have turnover time of decades to centuries [8].

33 A Global review of 67 studies related to SOC affected by tillage and crop sequences showed  
34 that almost 50% of studies were carried out in Canada and USA (Weil and Magdoff 2004a).  
35 Another review of 59 studies [3] showed that 50% of research studies were reported from  
36 USA, Canada and Argentina where soil were Mollisols and Sodosols, managed under  
37 highly mechanized practices. In the Mediterranean Basin numerous countries have been  
38 successful in establishing conservation agriculture (CA) but the areal extents are relatively  
39 uncertain. These include Spain, Portugal, France and Italy in Europe; Morocco and Tunisia  
40 in North Africa. Only Kazakhstan in central Asia has the areas exceeding one million hectare  
41 under CA. Countries in West Asia and Central Asia include Uzbekistan and Ukraine.  
42 Extensive research and development work has been conducted the West Asia and North  
43 Africa (WANA) in several countries since the early 1980s such as Morocco, [9], Tunisia  
44 [10,11] and in Turkey [12]. Similarly research, work on CA in Eurasia has been reported by  
45 [13], for Kazakhstan by Suleimenov, [14, 9] and [15], and [16 and 17]. Several international  
46 centers (e.g. International Center for Agricultural Research in the Dry Areas (ICARDA) and  
47 International Maize and Wheat Improvement Center (CIMMYT) have also been active in CA  
48 research in the WANA regions [18, 19 and 14]. [21] estimated that the SOC loss from soil of  
49 five Central Asian Countries (Kazakhstan, Kyrgyzstan, Tadjistan, Turkmenistan and  
50 Uzbekistan) of 1-2 Pg was due to agricultural mismanagement. In South Asia (e.g. Pakistan  
51 and Afghanistan) little information is available related to the SOC pools and its changes with  
52 land use and management. In Pakistan, most of research has been done on the importance  
53 of SOC in relation to fertility and magnitude of SOC. Less attention has thus far been given  
54 towards the effects of agricultural management on enhancing quality and quantity of SOC.

55 The SOC has a strong link with aggregate stability that is important to soil quality.  
56 Increased SOC concentration is often associated with improved soil physical condition [21].  
57 The encapsulation of SOC into soil aggregates provides physical protection against rapid  
58 decomposition and is one of the key determinants of soil stability against erosion [22].  
59 Although soil's structural stability is not considered as a direct plant growth factor, it exerts  
60 considerable influence on the air, water and nutrient supplies to the plant roots, as also on  
61 the movement of the soil macro-fauna [23]. Stable aggregates protect SOC by forming  
62 barriers between microbes and the substrate, thus inhibiting its microbial turnover [24]. The  
63 POC is an important agent in binding micro-aggregates which serve as precursor of macro-  
64 aggregates [25]. However, there is no general agreement as to the type of organic matter  
65 that plays a key role in enhancing aggregation [26]. Improvements of SOC and aggregate  
66 stability are often associated with minimum tillage (MT) and intensified cropping. These  
67 proven approaches are now widely used in large scale commercial agriculture [27].  
68 However, their use in drylands of developing countries, having small land holdings and  
69 marginal farming practices, is in its infancy. These dry areas are challenged by rapid  
70 population growth, frequent droughts, high climatic variability, land degradation and  
71 desertification, and widespread poverty. It is important to explore and demonstrate  
72 management options for improvement of SOC in these areas [28]. Therefore, a field  
73 experiment was conducted to assess the effects of different tillage systems and cropping  
74 sequences on labile SOC fractions, total organic carbon (TOC), bulk density and water  
75 stable aggregates in a subtropical dryland of Pakistan. The study was designed to test the  
76 hypothesis that tillage systems and crop sequences strongly affect SOC fractions under  
77 agroecological conditions of northern Punjab, Pakistan.

78

## 79 2. MATERIAL AND METHODS

80

### 81 2.1 Location and Experimental Layout

82 A two-year field experiment was conducted at the Research Farm of Pir Mehr Ali Shah-Arid  
83 Agriculture University Rawalpindi, Pakistan (33° 38' N, 73° 05' E) during 2010-11 and 2011-  
84 12. The experimental site is part of a wide rainfed track of northern Punjab called Pothwar  
85 plateau. The rainfall is of a bi-modal pattern with two maxima, the first in late summer  
86 (August and September) and the second during the winter-spring (February and March) (Fig.  
87 1). The summer or monsoon rains constitute about 70 % of the total annual rainfall of 750-  
88 950 mm. These rains are highly torrential and result in severe soil erosion [29]. The mean  
89 maximum temperature during summer ranges from 36 °C to 42 °C with extremes sometimes  
90 as high as 48 °C [30]. Soil of experimental site is clay loam with pH of 8, E<sub>Ce</sub> of 0.25 dS m<sup>-1</sup>,  
91 bulk density of 1.4 Mg m<sup>-3</sup>, and nutrient concentration (mg kg<sup>-1</sup> soil) of 3.35, 6.50 and 130  
92 for N, P and K, respectively. Predominant soil of the site (33° 38' N, 73° 05' E) is classified  
93 as Rawal series: Udic Haplustalf [31] (Table 2)

94 The experiment was laid out in a split-plot design. Main plots were comprised of two soil  
95 tillage systems: moldboard plough (MP, control), and minimum tillage (MT). Each main plot  
96 was divided into five sub plots with following crop sequences viz. fallow–wheat (*Triticum*  
97 *aestivum* L.) (FW) (control), mungbean (*Vigna radiate* L.) –wheat (MW), sorghum (*Sorghum*  
98 *bicolor*)–wheat (SW), green manure–wheat (GW) and mungbean-chickpea (MC) (*Cicer*  
99 *arietinum* L.). The green manure crop comprised of a mixture of mungbean and sorghum  
100 seeds, and ploughing under the biomass before the grain setting stage. Total six main-plots  
101 and thirty sub-plots were established. The main and sub plot sizes were 19×16 m and  
102 2.5×16 m, respectively. At the end of each season from each sub-plot one sample was taken  
103 so, total thirty soil samples were collected with replication for analysis. The tractor used was  
104 Massey Ferguson (MF) 240 of 50 horse power at 2.250 rpm. Crops were seeded with a  
105 winter seed drill at row spacing of 15 cm. No crop was seeded in the FW system for the  
106 period from the previous harvest of wheat in April until the sowing of next wheat in  
107 November. Under MP tillage the FW rotation involved moldboard ploughing to 25 cm depth  
108 at the start of summer and subsequent repeated three cultivations with tine cultivator for  
109 weed control. The FW system under MT, involved no ploughing throughout the fallow period  
110 except at the time of seedbed preparation for wheat. Weeds in fallow plots under MT were  
111 controlled with two sprays of roundup (glyphosate [N- (phosphonomethyl) glycine]) @ 1.5  
112 liter ha<sup>-1</sup>. In all treatments involving double cropping (i.e MW, SW, GW and MC), summer  
113 crops were sown at the onset of monsoon in July and harvested in mid-September. Winter  
114 crops were sown in early November and harvested in April. The MP ploughing was  
115 performed at depth of 25 cm on start of monsoon, followed by one tine cultivation and  
116 planting before sowing of summer crops. After the harvest of summer crop, soil was tilled by  
117 tine cultivator to 15 cm depth for 2-3 times before sowing of wheat. MT soil was kept free  
118 from any tillage except for the field preparation. The double cropping under MT involved only  
119 ploughing with tine cultivator at the time of sowing of summer and winter crops. Fertilization  
120 for mungbean, sorghum and wheat involved the application of 60 kg ha<sup>-1</sup> urea 100-50 of kg  
121 ha<sup>-1</sup> urea, and DAP, 120-80 kg ha<sup>-1</sup> urea and DAP respectively, applied at the time of  
122 seedbed preparation before the sowing of wheat. In MT plots, both summer and winter crop  
123 residues were returned back to the soil.

124

### 125 2.2 Soil Sampling and Analyses

Soil samples were obtained at one point in time without a priori baseline sampling. Soil samples were collected from 0-15 cm depth at the end of each cropping season. MBC was estimated by chloroform fumigation extraction method [32]. One portion of soil was fumigated and samples were extracted with 50 ml 0.5 M K<sub>2</sub>SO<sub>4</sub> by shaking at 200 rev min<sup>-1</sup> and filtered through a (Whatman No. 40) filter paper. The non-fumigated portion of soil samples were extracted similarly. TOC in the extracts were measured by using tube digestion method [32]. The PMC was measured by trapping CO<sub>2</sub> released during incubation in 20 cm<sup>3</sup> of 1 N NaOH solution and titrating it against standard 0.5 M HCl solution [33]. Measurement of POC involved dispersion of 5 g L<sup>-1</sup> sodium hexametaphosphate, by passing the slurry through 50 µm sieve [34] and analyzing for C content [32]. Water stable aggregates (WSA) were measured using the wet aggregate sieving apparatus (Eijkelkamp, Netherlands) in which aggregates (1-2 mm) were placed in 0.25 mm sieve and immersed for three minutes in water. The material remaining in the sieve was immersed again in solution of 2 g L<sup>-1</sup> sodium hexametaphosphate. All sediments in the container were dried at 60 °C for overnight and weighed [35]. TOC was determined by the wet oxidation method [36] 34. Bulk density was measured with core sampler using core 5cm in diameter and 5cm deep [37]. The SOC stock was computed on equal mass basis by using the procedure of [38].

143

## 144 2.3 Statistical Analysis

145

The data were subjected to analysis of variance (ANOVA) using the split-plot design, and means were compared at 1 % level of significance the by the Least Significant Difference (LSD) test [39]. The year effect was tested using a "Combine experiment" Model (11 MSTATC), with the block within year effect as the error term. The main plot effect (tillage × year interaction) was tested with appropriate error term for the split plot design. Cropping sequence and other effects were tested by using residual error. LSD value > 0.01. Year effect was tested using a 'Combine experiment' Model (11 MSTATC).

153

154

## 155 3. RESULTS AND DISCUSSION

156

### 157 3.1 Microbial Biomass Carbon

The response of MBC to tillage systems and crop sequences varied among the years (Fig. 3a), it was more pronounced in the second year than the first year when the highest MBC was measured under MT in combination with the MW sequence. The least MBC was recorded in soil under MP for three specific crop sequences: GW, SW and MC cropping sequences. Overall the soil under MT had 37 % higher MBC than that under MP. However, comparing the data of both experimental years, the soil under MP contained the highest MBC which was 46 % more in MW than that under FW and SW. Furthermore, the concentration of MBC under soil in GW was 20 % higher than that under MW, and 17 % more than that under SW cropping sequence. However, the MBC in soil under MT for MW was higher by 19 %, 22 %, 26 % and 20 % than that under FW, SW, GW and MC cropping sequences. In both experimental year with in tillage systems and cropping sequence, the trend in MBC differed under MP than that under MT system. For example, in the first year, the highest MBC was observed in soil under GW cropping sequence (247 µg g<sup>-1</sup>). In the second year, the highest concentration (160 µg g<sup>-1</sup>) was observed under MW and it was similar to that for the first year. The highest concentration of MBC under MT (159 µg g<sup>-1</sup>) was observed under MC. In the second year, the highest MBC of 360 µg g<sup>-1</sup> was observed in the MW cropping sequence.

Tillage had prominent effect on labile SOC fractions (MBC and PMC) than did cropping sequences. On the other hand, MP had higher proportion of intermediate SOC (*i.e.* POC)

176

fraction. These trends show that mineralization was relatively faster in soil than under MP than that under MT. Because the MT tillage involves return of crop residues to soil, this not only frequently recharges the active SOC pool but also reduces the surface soil temperature [40]. Further, less physical disintegration and oxidation of returned residues reduces the rate of decomposition under MT. In contrast, intensive ploughing with MP accelerates decomposition due to more soil disturbance, physical disintegration of aggregates [41].

## 3.2 Potentially Mineralizable Carbon

The response of PMC to tillage systems and crop sequences varied among the years (Fig. 3b), it was more noticeable in the second than in the first year when the highest PMC was measured in the soil under MT in combination with the MC sequence. The least PMC was recorded in soil under MP for GW and MC crop sequences. Overall the soil under MT had 10 % higher MBC than that under MP. However, comparing the data of both experimental years, the PMC concentration in soil under MP for FW was higher by 19 %, 0.74 %, 19 % and 56 % than that under MW, SW, GW and MC cropping sequences. Moreover, the PMC in soil under MT for MC was higher by 22 %, 17 %, 42 % and 18 % than that under FW, MW, SW, and GW cropping sequences. In both experimental year with in tillage systems and cropping sequence, the trend in PMC differed under MP than that under other tillage systems. For example, in the first year, the highest PMC was observed in soil under FW cropping sequence ( $388 \mu\text{g g}^{-1} \text{ soil day}^{-1}$ ). In the second year, the highest concentration ( $188 \mu\text{g g}^{-1} \text{ day}^{-1}$ ) was observed in the soil under SW. The highest concentration of PMC under MT ( $371 \mu\text{g g}^{-1} \text{ soil day}^{-1}$ ) was observed in the soil under MC sequence. In the second year, the highest PMC of  $447 \mu\text{g g}^{-1} \text{ soil day}^{-1}$  was observed in the SW cropping sequence.

Differences among crops for SOC fractions could be attributed to amount of residue produced and returned to the soil. The fallowing-based sequences had lower proportion of active SOC because in a fallow period mineralization of SOC is higher due to more soil moisture [42]. Cropping sequence involving continuous cereal sequences that involved sorghum, had higher POC concentration than legume-based sequences because sorghum being a C4 plant has more lignin and phenol contents which are resistant to decomposition [43].

## 3.3 Particulate Organic Carbon

The response of POC was only significant in the second year (Fig. 3c), it was more evident in the second year than in the first year when the highest POC was measured under MT in combination with the SW cropping sequence. Overall, the soil under MP had 6.42 % higher POC than that under MT. The least POC was recorded in soil under MP for SW and MW cropping sequences. However, comparing the data of both experimental years, the POC concentration in soil under MP for GW was higher by 25 %, 23 %, 10 % and 3 % than that under FW, MW, SW and MC cropping sequences. Moreover, the POC in soil under MT for MC was higher by 16 %, 7.45 %, 1.27 % and 33% than that under FW, MW, SW, and GW cropping sequences. In both experimental years with in tillage systems and cropping sequence, the trend in PMC differed under MP than that under MT system. For example, in the first year, the highest POC pool was observed in soil under MC cropping sequence ( $2.0 \text{ Mg ha}^{-1}$ ). In the second year, the highest pool of POC ( $1.94 \text{ Mg ha}^{-1}$ ) was observed under GW, and that under MT ( $1.93 \text{ Mg ha}^{-1}$ ) was observed under MC sequence. In the second year, the highest POC of  $1.76 \text{ Mg ha}^{-1}$  was observed in the SW cropping sequence.

Differences among crops for SOC fractions could be attributed to amount of residue produced and returned to the soil. The fallowing-based sequences had lower proportion of active SOC because in a fallow period mineralization of SOC is higher due to more soil



moisture (42). Cropping sequence involving continuous cereal sequences that involved sorghum, had higher POC concentration than legume-based sequences because sorghum being a C<sub>4</sub> plant has more lignin and phenol contents which are resistant to decomposition (43).

## 3.4 Total Organic Carbon

The response of TOC to the tillage and cropping sequence were statistically non-significant both the years (Table 4). The average TOC pool under MP during the first year was 7.70 Mg ha<sup>-1</sup> compared with 8.42 Mg ha<sup>-1</sup> in second year. The average TOC pool in soil under MT was 7.63 Mg ha<sup>-1</sup> in first year compared with 8.42 Mg ha<sup>-1</sup> in second year. The average TOC pool was relatively high under GW cropping sequence.

The TOC concentration was neither affected by tillage nor crop sequences, possibly due to short duration of the experiment. Conversions to no tillage for < 5 years affect the SOC concentration only in the topsoil (44). In general, however, no-tillage practices can increase TOC concentration in the surface layer, but this increase might take approximately 5–10 years due to site specificity of tillage systems and cropping sequences (45).

## 3.5 Bulk Density

The response of soil bulk density to tillage and cropping sequence treatments in both years were statistically non-significant (Table 5). Overall, the soil under MP had average bulk density of 1.61 Mg m<sup>-3</sup> in first year compared with 1.28 Mg m<sup>-3</sup> in the second year. The least bulk density was recorded in soil under MP for SW and MC cropping sequence in the first year, and under SW in the second year. In general, soil under MP cropping sequence had relatively high bulk density under GW sequence. The average bulk density of the soil under MT was relatively high in the first year than in the second year. Soil under GW cropping sequence had relatively high bulk density (Table 5).

## 3.6 Water Stable Aggregates

The response of water stable aggregates (WSA) to tillage systems and crop sequences differed among the years (Table 6), and the response of WSA in the second year than the first year when the highest WSA was measured under MT in combination with the MC sequence. The least WSA was observed in soil under MP for GW, SW, MW and MC cropping sequences. Overall, the soil under MT had 34% higher WSA than that under MP. However, comparing the data of both experimental years, the soil under MP contained the highest WSA which was 8 % more in soil under FW than that under MW. Furthermore, the proportion of WSA in the soil under FW was 7% higher than that under SW, 6 % higher than that under GW, and also 6 % more than that under MC cropping sequence. However, the WSA in soil under MT for MC was higher by 4 %, 11 %, 12 % and 2 % than that under FW, MW, SW, and GW cropping sequences. In both experimental year with in tillage systems and cropping sequence, the trend in WSA differed under MP than that under MT. For example, in the first year, the highest WSA was observed in soil under MC cropping sequence (21.4%). In the second year, the highest stability WSA of 36.5 % was observed under FW. The highest proportion of WSA under MT (27.4%) was observed under FW. In the second year, the highest WSA of 48.6 % was observed in the MC cropping sequence.

Higher WSA in soil under MT than MP may be attributed to less physical disruption and enhancement of active SOC. Addition of plant residues under MT stimulates more fungal hyphae which in combination with residue derived polysaccharide play a key role in increasing WSA [46]. [42] reported that standing stubbles of crop residue also increase

269 aggregation because roots can produce exudates and physically exert lateral pressures that  
270 results in cohesion of soil particles around the roots. Decline of WSA under intensive tillage  
271 of MP could be attributed to mechanical disruption of macro aggregates.

272 Among crop sequences, the highest aggregate stability was observed under  
273 sorghum–wheat and green manure–wheat sequence. This trend could be due to  
274 polysaccharides and fungal hyphae promoted by cereal crops and more bacterial activities in  
275 legumes.

## 276 277 4. CONCLUSION

278 Tillage systems have pronounced effect on SOC fractions and aggregate stability than  
279 cropping sequences. Labile pool carbon fractions (as MBC and PMC) were higher in soil  
280 under MT as compared to that under MP. In particular, legume-based cropping sequenced,  
282 enhanced WSA as compared with intensive tillage and fallow-based cropping system. POC  
283 concentration was more in soil under MP than that under MT. However, TOC trend was  
284 similar under both treatments. TOC pools were below the critical value (1.2-1.5 Mg ha<sup>-1</sup>) and  
285 depleted with passage of time so, need to adopt proper management practices such as  
286 addition of residues, green manure, mulching, cover crops, intensified cropping sequence  
287 and CA. The results of the study provide encouraging evidence for the success of minimum  
288 tillage with legume based cropping sequences in dryland Pothwar. There is dire need of long  
289 term studies for corroboration of the results and promotion of conservation agriculture in  
290 dryland Pothwar, Pakistan and marginal dryland areas elsewhere in the developing world.

## 291 292 293 REFERENCES

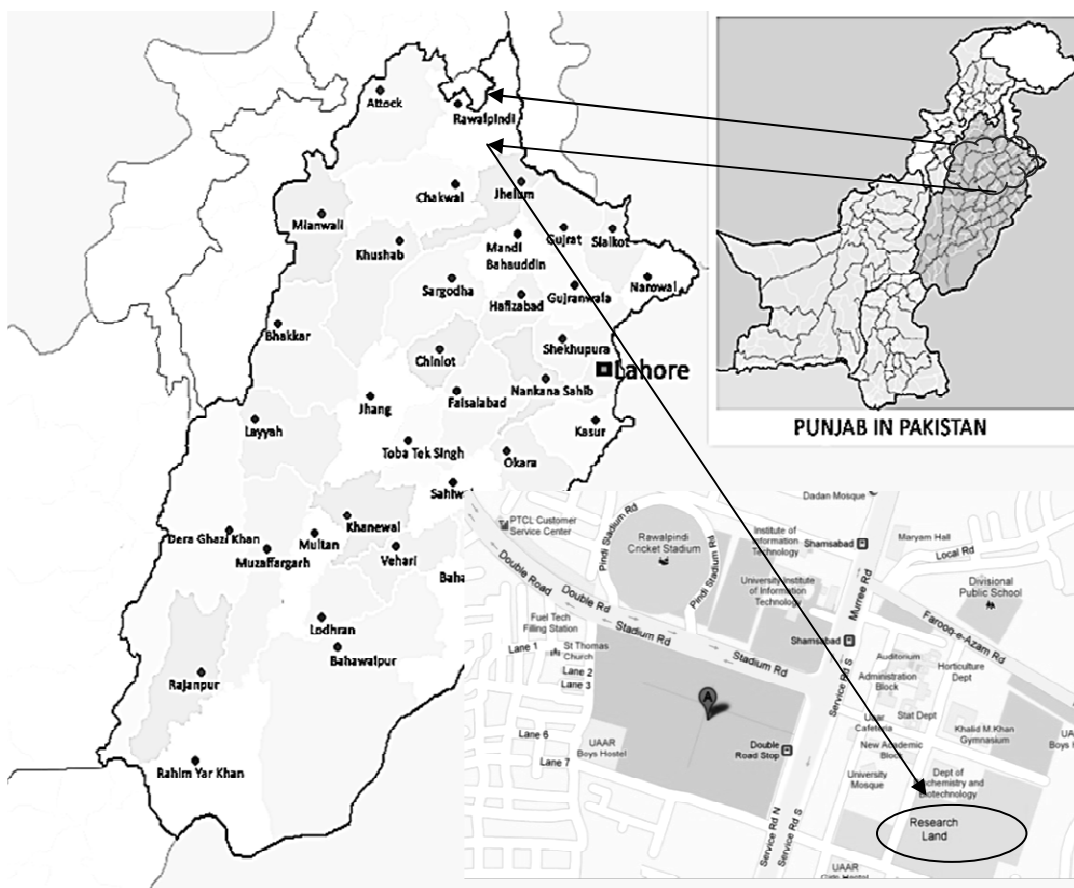
- 294 1. Zhou, Y., Z. Pei, J. Su, J. Zhang, Y. Zheng, J. Ni, C. Xiao, and R. Wang. 2012.  
295 Comparing soil organic carbon dynamics in perennial grasses and shrubs in a  
296 saline-alkaline arid region, northwestern China. PloS one 7, e42927.
- 297 2. Schmidt, MWI, M.S.S. Torn, T. Abiven, G. Dittmar, I.A. Guggenberger, C.M.M.S.  
298 Janssens, M.Silva, and E.F. Fay. 2012. Effect of Salinity on Soil Microorganisms. In  
299 Soriano, M. C. H. (ed.), Soil Health and Land Use Management. InTech. DOI:  
300 10.5772/28613.
- 301 3. Weil RR., and F. Magdoff.. Significance of soil organic matter to soil quality and  
302 health. Soil organic matter in sustainable agriculture. CRC Press, Boca Raton. 2004;  
303 FL, 1-43.
- 304 4. Stevenson FJ. Humus chemistry: genesis, composition, reactions: 2nd ed.,  
305 John Wiley & Sons, New York. 1994.
- 306 5. Paul EA, Clark, Eds. FE Soil Microbiology and Biochemistry, 2nd ed., Academic  
307 Press, San Diego. 1996.
- 308 6. Paul EA, Collins HP, Eds. The characteristics of organic matter relative to nutrient  
309 cycling in advance study soil science. CRC Press Boca Raton, FL. 1997; Pp.181-  
310 197.
- 311 7. Brady NC, Weil RR. Soil organic matter. The Nature and Properties of Soils,  
312 Prentice Hall Inc, New Jersey. 2008;. 518-519.

- 313 8. Dumale, WAJ, Miyazaki T, Nishimura T, Seki K. CO<sub>2</sub> evolution and short-term  
314 carbon turnover in stable soil organic carbon from soils applied with fresh organic  
315 matter *Geo. Phys. Res. Lett.* 2000; 36: L01301.
  
- 316 9. Mrabet R. 2002. Stratification of soil aggregation and organic matter under  
317 conservation tillage systems in Africa. *Soil and Tillage Research* (66) 119-128.
  
- 318 10. M'Hedhbi K, Chouen S, Ben-Hammouda M. A recent Tunisian experience with direct  
319 drilling. *Proceedings of the II World Congress on Conservation Agriculture*, pp. 2003;  
320 132-135.
  
- 321 11. Ben-Hammouda M, Hedhbi KM, Kammassi M, Gouili H. 2007. Direct drilling: An  
322 agro-environmental approach to prevent land degradation and sustain production.  
323 *The Proceedings of the International Workshop on Conservation Agriculture for*  
324 *Sustainable Land Management to Improve the Livelihood of People in Dry Areas,*  
325 *2003; pp. 37-48.*
  
- 326 12. Avci M, Mevveci, Akar K, T Ozdemir, Yururer B, Karakurt A, Surek E, Karacam DM.  
327 Turkish experience on dryland agronomy: lessons from the past and the recent  
328 experiments. *J. Agric. Res.* 2007; 45: 33-42.
  
- 329 13. Gan Y, Harker K.N, McConkey B. and Suleimanov M, Moving toward no till practices  
330 in Northern Eurasia. In: *No till Farming Systems.* Goddard T, Zebisch MA, Gan,  
331 YT, Ellis, W, Waston A, Sombatpant S. (eds). *World Association of Soil and Water*  
332 *Conservation, Special Publication No. 3, WASWCA, Bangkok, 2008; pp 179-195*
  
- 333 14. Suleimenov M. 2009. From conservation tillage to conservation agriculture. In *From*  
334 *conservation tillage to conservation agriculture, Proceedings of the International*  
335 *Consultation Conference on "No-till with soil cover & crop rotation: a basis for policy*  
336 *support to conservation agriculture for sustainable production intensification, 56-68.*
  
- 337 15. Fileccia T. Importance of zero-tillage with high stubble to trap snow and increase  
338 wheat yields in Northern Kazakhstan. *Working paper.* 2009.
  
- 339 16. Nurbekov A. *Manual on Conservation Agriculture Practices in Uzbekistan.* In *Manual*  
340 *on Conservation Agriculture Practices in Uzbekistan: Ministry of Agriculture, FAO &*  
341 *ICARDA, Tashkent, Uzbekistan. 2008.*
  
- 342 17. Ministry of Food and Agriculture, Lahore. 1974.
  
- 343 18. Pala M, Ryan J, Zhang H, Singh M, Harris H. Water-use efficiency of wheat-based  
344 rotation systems in a Mediterranean environment. *Agricultural Water Management.*  
345 2007; 93: 136-144.
  
- 346 19. Karabayev M. Improvement of soil and water management in Kazakhstan:  
347 Conservation Agriculture for wheat production and crop diversification. *Proceedings*  
348 *of an International Technical Workshop on Investing in Sustainable Crop*  
349 *Intensification: The case for improving soil health. 2008.*
  
- 350 20. Lal R. Carbon sequestration in soils of central Asia. *Land Degradation &*  
351 *Development* 15: 563-572. 2004



- 352 21. Whitbread, A.M, Graeme JB, Rod DBL. Managing legume leys, residues and  
353 fertilizers to enhance the sustainability of wheat cropping systems in Australia 2. Soil  
354 physical fertility and carbon, Soil Till. Res. 2000; 54:77-89
- 355 22. Wong VNL, Greene RSB,. Dalal RC, Murphy BW. Soil carbon dynamics in saline  
356 and sodic soils: a review, Soil Use Manage. 2010; 26: 2-11.
- 357 23. De Souza Silva CMM, Fay EF. Effect of salinity on soil microorganisms. Soil Health  
358 and Land Use Management. InTech Publisher, 2012; 1-22.
- 359 24. Six J, H Bossuyt, Degryze S, Denef K.. A history of research on the link between  
360 (micro) aggregates, soil biota, and soil organic matter dynamics. Soil Till. Res. 2004;  
361 79:7-31.
- 362 25. Jastrow J, Miller R, Lussenhop J. Contributions of interacting biological mechanisms  
363 to soil aggregate stabilization in restored prairie1. Soil Biol. Biochem. 1998; 30: 905-  
364 916.
- 365 26. Krull ES, Skjemstad JO, Baldock JA., Functions of soil organic matter and the effect  
366 on soil properties. CSIRO Land & Water, South Australia, Report, Project CSO  
367 00029. 2004.
- 368 27. Alvarez R. A review of nitrogen fertilizer and conservation tillage effects on soil  
369 organic carbon storage, Soil Use. Manage. 2005; 21: 38–52.
- 370 28. ICARDA. Conservation Agriculture; opportunities for intensified farming  
371 environmental conservation in dry areas. Research to Action 2. International Center  
372 for Agricultural Research in the Dry Areas (ICARDA), Aleppo, Syria. 2012.
- 373 29. Shaheen A, Naeem MA, Jilani G, Shafiq M. Integrated soil management in eroded  
374 land augments the crop yield and water-use efficiency. Acta Agri. Scan. Section B–  
375 Soil and Plant Sci. 2010; 60: 274-282.
- 376 30. Nizami MMI, Shafiq M, Rashid A, Aslam M. The soils and their agricultural  
377 development potential in Potwar, NARC, Islamabad. 2004
- 378 31. Govt. of Pakistan. Soil Series Key and Soil Classification. Soil Survey of Pakistan
- 379 32. Nelson DW, Sommers LE. Total carbon, organic carbon and organic matter. In  
380 Sparks, D.L. (eds.). Methods of Soil Analysis, Chemical Methods. SSA Book Series:  
381 5 Soil Sci. Soc. Am. Wisconsin. USA. 2005.
- 382 33. Kassel A. Nannipieri P. Methods in Applied Soil Microbiology and Biochemistry,  
383 Academic Press, San Diego, USA.1995.
- 384 34. Camberdella CA. Elliot ET. Particulate soil organic matter across grass land  
385 cultivation sequences. Am. J. Soil Sci. 1992; 76: 395-401.
- 386 35. Beare MH, Bruce R. A comparison of methods for measuring water-stable  
387 aggregates: implications for determining environmental effects on soil structure.  
388 Geoderma 1993; 56: 87-104.

36. Walkley A, Black IA. An examination of digestion method for determining soil organic matter and a proposed modification of the chromic acid titration method. *Soil Sci.* 1934.; 37: 29-37.
37. Blake GR, Hartge KH. Bulk Density by Core Method. In: Klute. A. (ed). *Methods of Soil Analysis, Part I.* Amer. Soc. Agron. No. 9. Madison, Wisconsin. 1986; Pp. 364-367.
- 38.
39. Ellert BH, Janzen H, McConkey B. Measuring and comparing soil carbon storage. *Soil processes and the carbon cycle.* CRC Press, Boca Raton, FL, 2001;131-146.
40. Steel RGD, Torrie JH, Boston MA. *Principles and Procedures of Statistics: A biometrical approach,* Mc Graw Hill Inc. New York. 1997;.P, 633.
- 41.
42. Zibilske, LM., Makus DJ.. Black oat cover crop management affects on soil temperature and biological properties on a Mollisol in Texas, USA, *Geoderma* 2009; 149:179-185.
43. Paustian K, Six J, Elliot ET, Hunt HW. Management options for reducing CO<sub>2</sub> emission from agricultural soils, *Biochem.* 2000; 48: 147-163
44. Benbi DK, Nieder R. *Handbook of processes and modeling in the soil-plant system.* Routledge.
45. Six J, Frey SD, Thiet RK, and Batten KM. Bacterial and fungal contributions to carbon sequestration in agroecosystems, *Soil Sci. Soc. Am. J.* 2006 ; 70: 555-569.
46. McCarty G, Lyssenko N, Starr J. Short-term changes in soil carbon and nitrogen pools during tillage management transition. *J. Soil Sci. Soc. Amer.* 1998; 62: 1564-1571.
47. West TO, Post WM. Soil organic carbon sequestration rates by tillage and crop rotation. *J. Soil Sci. Soc. Am.* 2002; 66: 1930-1946.
48. Elmholt S, Schjønning P, Munkholm LJ, Debosz K. Soil management effects on aggregate stability and biological binding. *Geoderma*, 2008;144: 455-467.

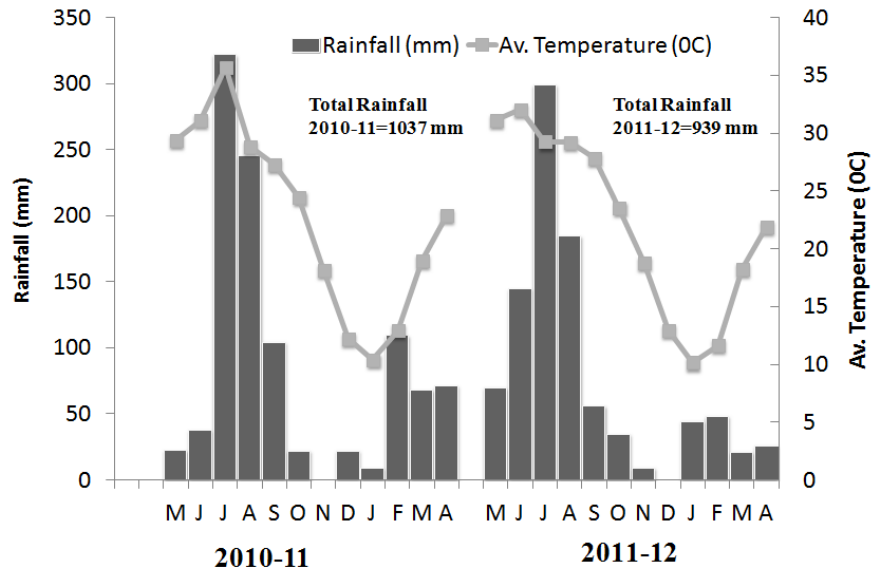


424

425 **Fig.1** The map of the experimental location, the pothwar plateau, Punjab Province

426

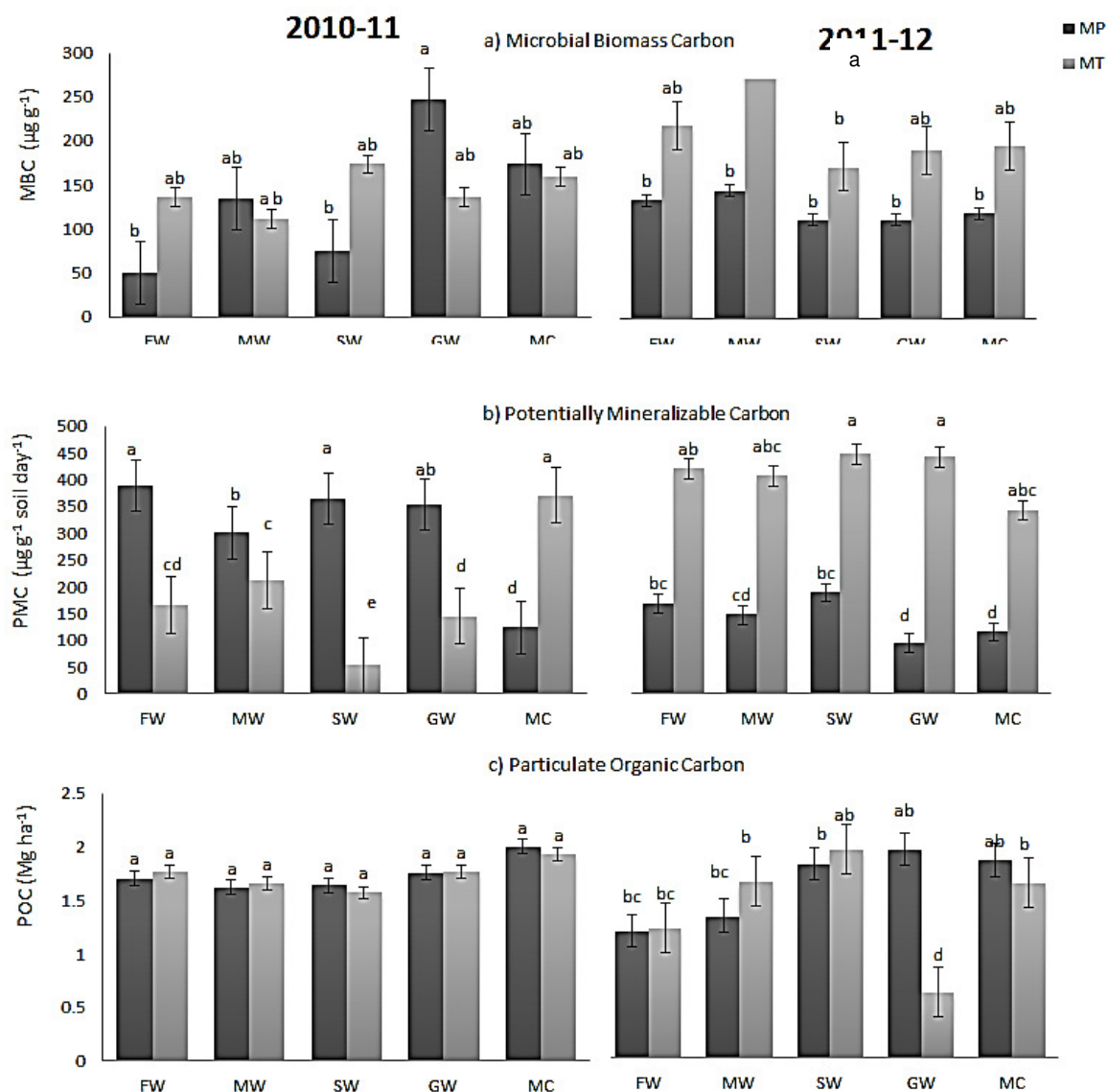
427



428

429 **Fig.2 Monthly rainfall (mm) and mean monthly temperature (°C) during the**

430 **experimental period**



**Fig. 3 The effect of tillage systems and crop sequences on labile SOC fractions**  
**a) microbial biomass carbon, b) potentially mineralizable carbon and c)**  
**particulate organic carbon**

The error bars represent the standard error. Means with different letters are significantly different according to LSD test at  $P = 0.01$



440

**Table 1: The ANOVA table of variable assessed**

Treatments	-----P > 0.01-----						
	DF	MBC	CO <sub>2</sub>	POC	TOC	WSA	Bulk density
Year	1	*	*	ns	ns	ns	ns
Tillage	2	**	**	**	ns	*	ns
Crop	4	**	**	**	ns	ns	ns
Year × Tillage	2	**	**	**	ns	*	ns
Year × Crop	4	**	**	**	ns	ns	ns
Tillage × Crop	8	**	**	**	ns	ns	ns
Year × Tillage × Crop	8	**	**	**	ns	*	ns

441

**Table 2: Physico-chemical properties of experimental soil**

Soil Character	Unit	Mean Value
Soil texture		clay loam
Sand (2.0-0.2 mm)	%	38.1±0.41
Silt (0.2-0.02 mm)	%	32.2±0.94
Clay (0.02-0.002 mm)	%	29.6±0.24
Saturation	%	0.3±0.01
Soil pH		7.7±0.05
ECe	dS m <sup>-1</sup>	0.2±0.02
Bulk Density	Mg m <sup>-3</sup>	1.4±0.04
Available P	mg kg <sup>-1</sup>	3.8±0.12
Extractable K	mg kg <sup>-1</sup>	130±0.24
Nitrate-N	mg kg <sup>-1</sup>	6.5±0.22
SOC	(Mg ha <sup>-1</sup> )	6.1±0.05
Moisture (Available)	cm m <sup>-1</sup>	16.0±0.09
CEC	c mole <sup>(+)</sup> kg <sup>-1</sup>	13.7±0.12
Water Stable Aggregates	%	20±0.05
CaCO <sub>3</sub>	%	0.3±0.01
Soil Classification		Typic Ustochrepts Inceptisols Rawal series: Udic Haplustalf (Govt. of Pakistan, 1974)

443

444

445

446

447

448

449

450

451

**Table 3: The effect of tillage systems and crop sequences on total organic carbon concentration (%) at 0-15cm soil.**

Rotations	TOC (%)			
	2010-11	2011-12	2010-11	2011-12
	MP <sup>NS</sup>	MP <sup>NS</sup>	MT <sup>NS</sup>	MT <sup>NS</sup>
Fallow-Wheat	0.43	0.65	0.44	0.61
Mungbean-Wheat	0.41	0.62	0.41	0.59
Sorghum-wheat	0.45	0.60	0.51	0.62
Green Manure-wheat	0.55	0.71	0.64	0.65
Mungbean- chickpea	0.55	0.54	0.45	0.67

Tillage systems: MP, mouldboard plow and MT, minimum tillage.

456

**Table 4: The effect of tillage systems and crop sequences on total organic carbon pool (Mg ha<sup>-1</sup>) at 0-10cm Soil**

Rotations	TOC (Mg ha <sup>-1</sup> )					
	2010-11	2011-12	Mean <sup>NS</sup>	2010-11	2011-12	Mean <sup>NS</sup>
	MP <sup>NS</sup>	MP <sup>NS</sup>		MT <sup>NS</sup>	MT <sup>NS</sup>	
Fallow-Wheat	7.19	8.72	7.95	7.00	8.24	7.62
Mungbean-wheat	6.67	8.31	7.49	6.50	7.97	7.23
Sorghum-wheat	7.26	8.12	7.69	7.51	8.44	7.97
Green Manure-wheat	9.90	10.9	10.0	10.1	9.95	10.0
Mungbean- chickpea	8.30	6.02	7.16	6.97	7.48	7.22
Mean	7.70	8.42		7.63	8.42	

Tillage systems: MP, mouldboard plow and MT, minimum tillage.

461

**Table 5: The effect of tillage systems and crop sequences on bulk density (Mg m<sup>-3</sup>) at 0-5cm depth**

Rotations	Bulk density (Mg m <sup>-3</sup> )					
	2010-11	2011-12	Mean <sup>NS</sup>	2010-11	2011-12	Mean <sup>NS</sup>
	MP <sup>NS</sup>	MP <sup>NS</sup>		MT <sup>NS</sup>	MT <sup>NS</sup>	
Fallow-Wheat	1.67	1.25	1.45	1.60	1.34	1.47
Mungbean-wheat	1.62	1.36	1.49	1.60	1.35	1.46
Sorghum-wheat	1.61	1.14	1.37	1.46	1.50	1.40
Green Manure-wheat	1.66	1.53	1.59	1.59	1.53	1.56
Mungbean- chickpea	1.61	1.16	1.33	1.54	1.11	1.32
Mean	1.61	1.28		1.55	1.33	

Tillage systems: MP, mouldboard plow; TC, tine cultivator and MT, minimum tillage.

466

467

468

469

470 **Table 6: The effect of tillage systems and crop sequences on aggregate stability.**

Rotations	Aggregate Stability (%)					
	2010-11			2011-12		
	MP	MT	Mean	MP	MT	Mean
Fallow-Wheat	19.8 c	27.5 a	23.7 A	36.5 a	38.1 d	33.0 AB
Mungbean-wheat	19.9 c	21.3 c	20.6 A	31.5 bc	39.5 c	32.7 AB
Sorghum-wheat	20.7 b	22.8 b	21.7 A	31.5 bc	37.5 e	31.7 B
Green Manure-wheat	21.2 a	20.9 d	21.1 A	31.6 b	46.3 b	36.5 A
Mungbean- chickpea	21.4 a	20.3 e	18.8 A	31.3 c	48.6 a	35.4 AB
Mean	20.6 C	22.6 C		32.5 B	42.0 A	

471 Tillage systems: MP, mouldboard plow and MT, minimum tillage.

472